

Double Attack

Double Attack is Attacking using one of your piece for:-

At least 3 Combinations you can observe

Two Pieces at the same time

One Check or One Piece

One Checkmating Square & One Piece

Also spot Hanging pieces so that you can easily attack them

Like when there's simply a point that one piece has to be used to do a double attack in the position then

breakdown the piece movements

One piece for example

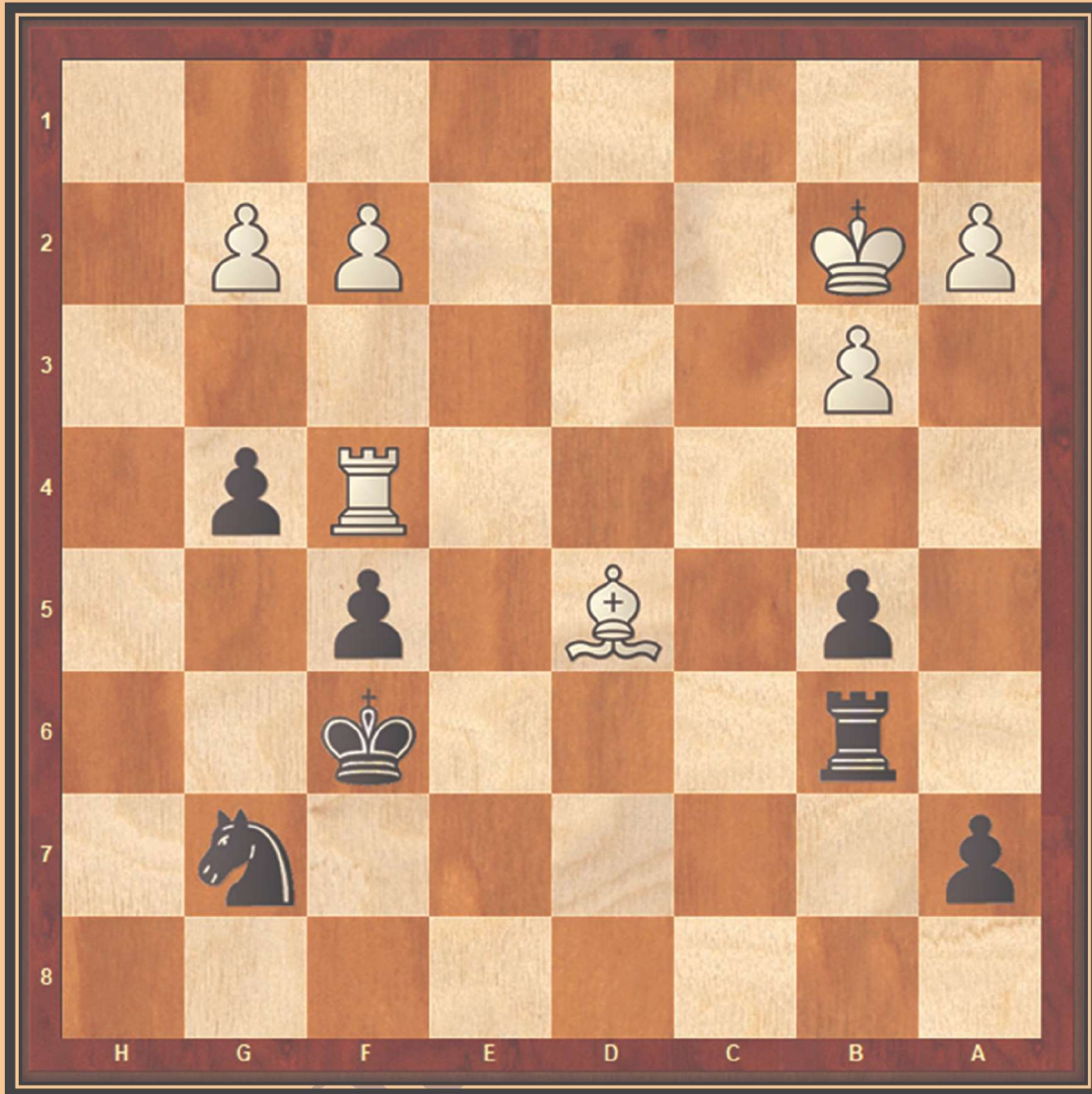
you have queen which can be used for double attack

break the queen movement & figure out the Double Attack

In the above example the Queen just rushes to c4 square in order to attack the Black Rook planning for checkmate on c8.

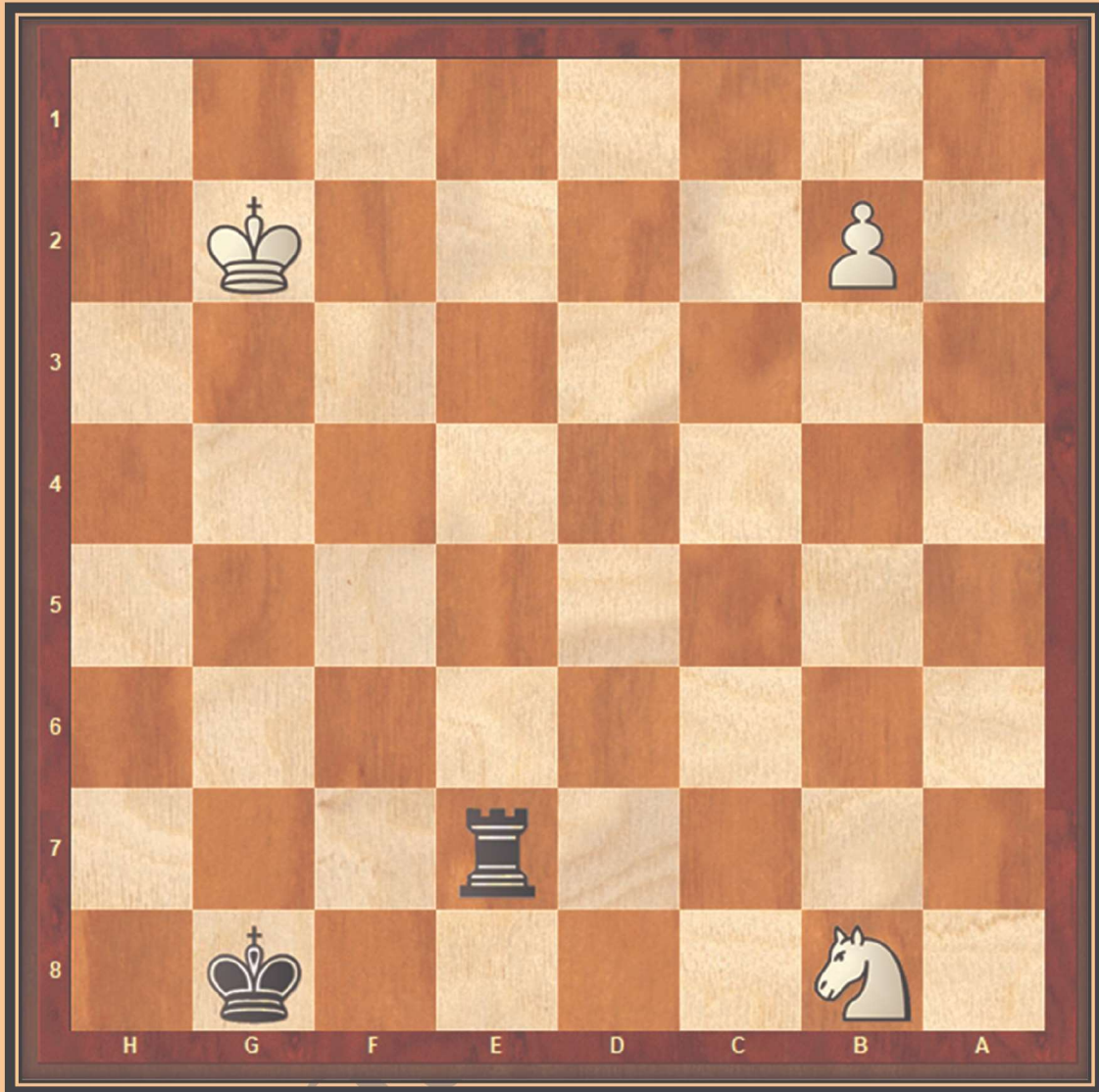
Solve the following puzzles

1. Setup the position on your board
2. Spot the pieces which are not protected also search checkmating squares/threats
3. Attack the two weaknesses together !
4. Try to write the notations in the given box
5. As of now Sayonara!



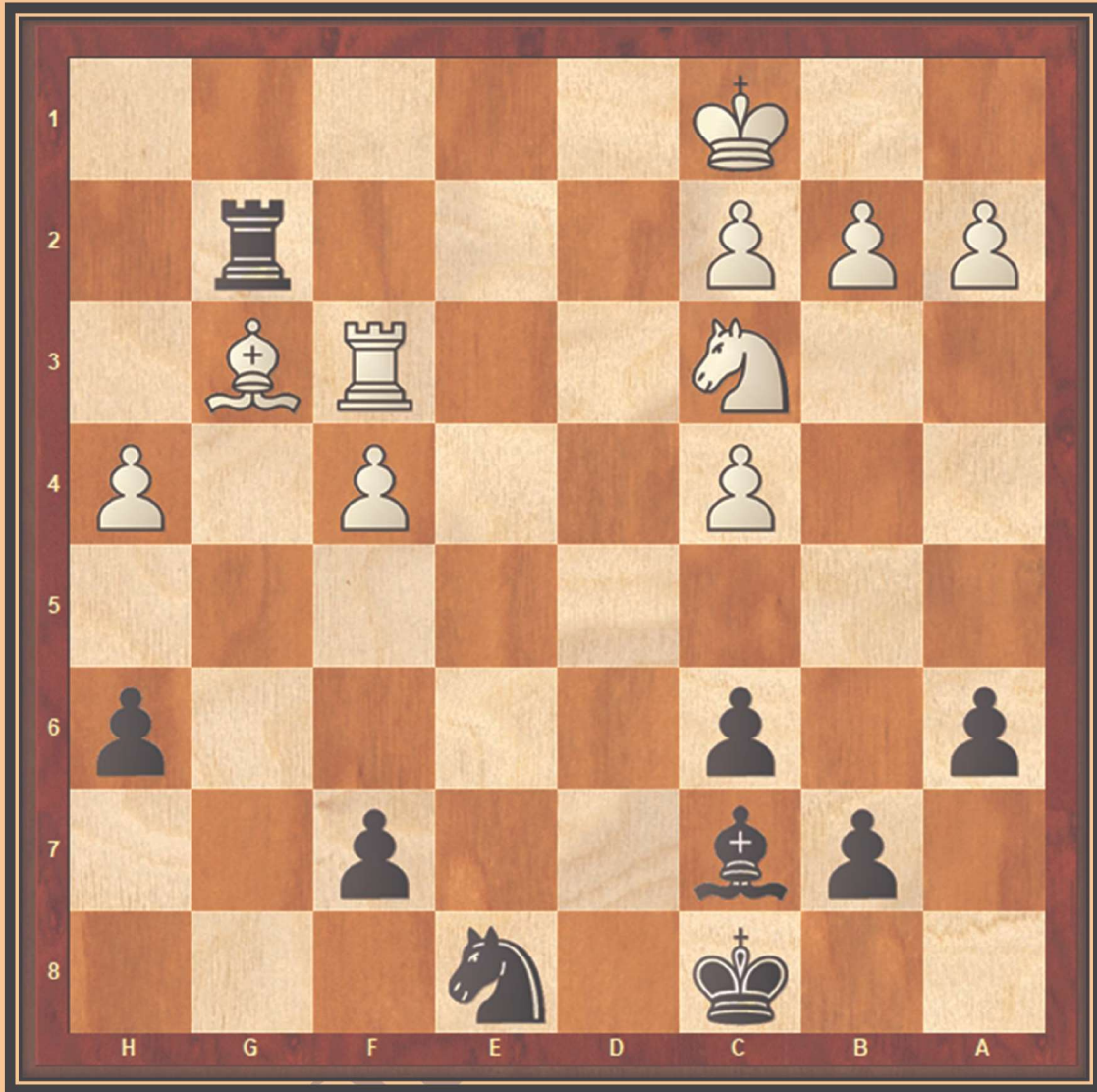
Black to Play Create a Double Attack

White	Black
1) _____	



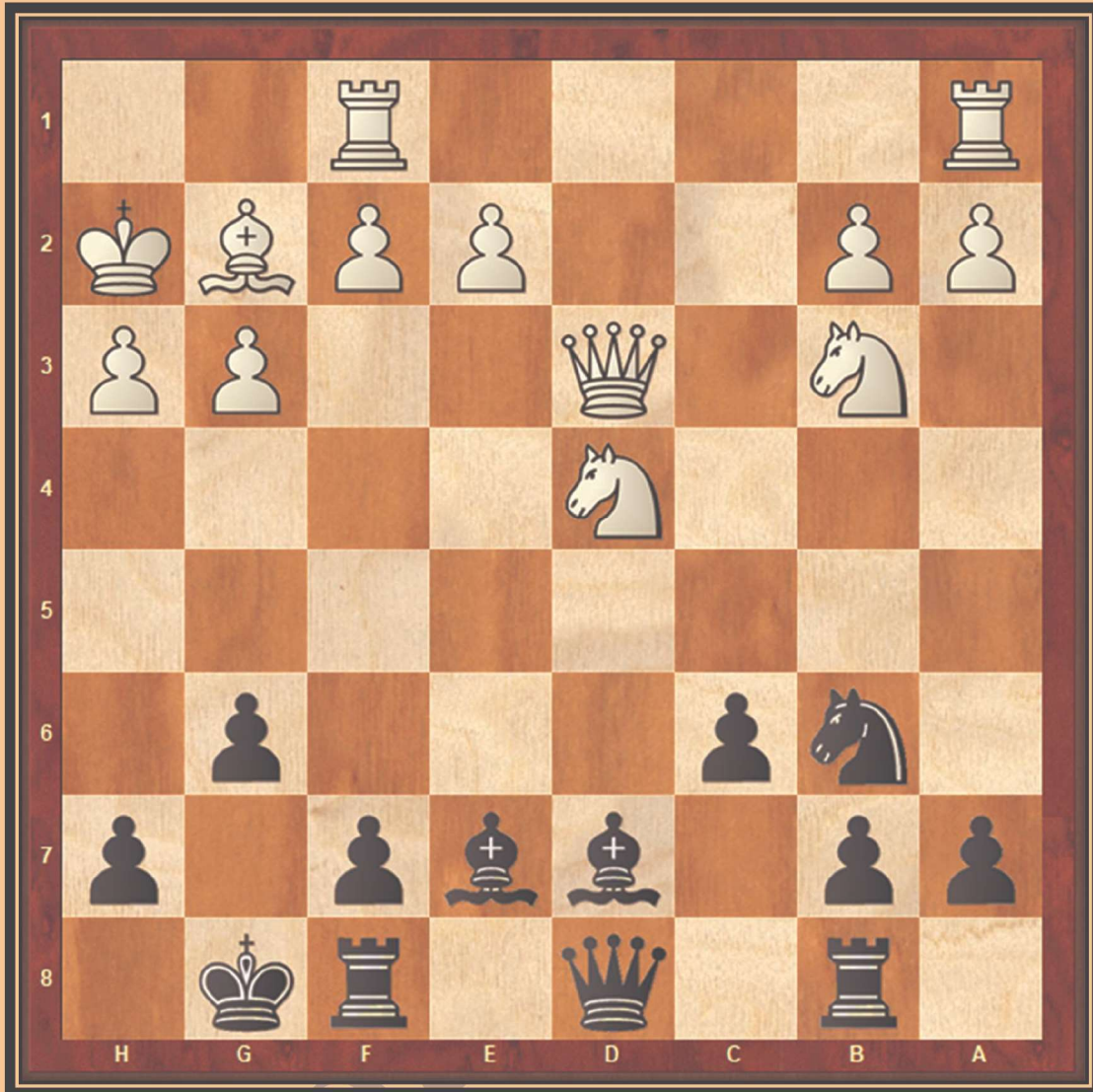
Black to Play Create a Double Attack

White	Black
1) _____	



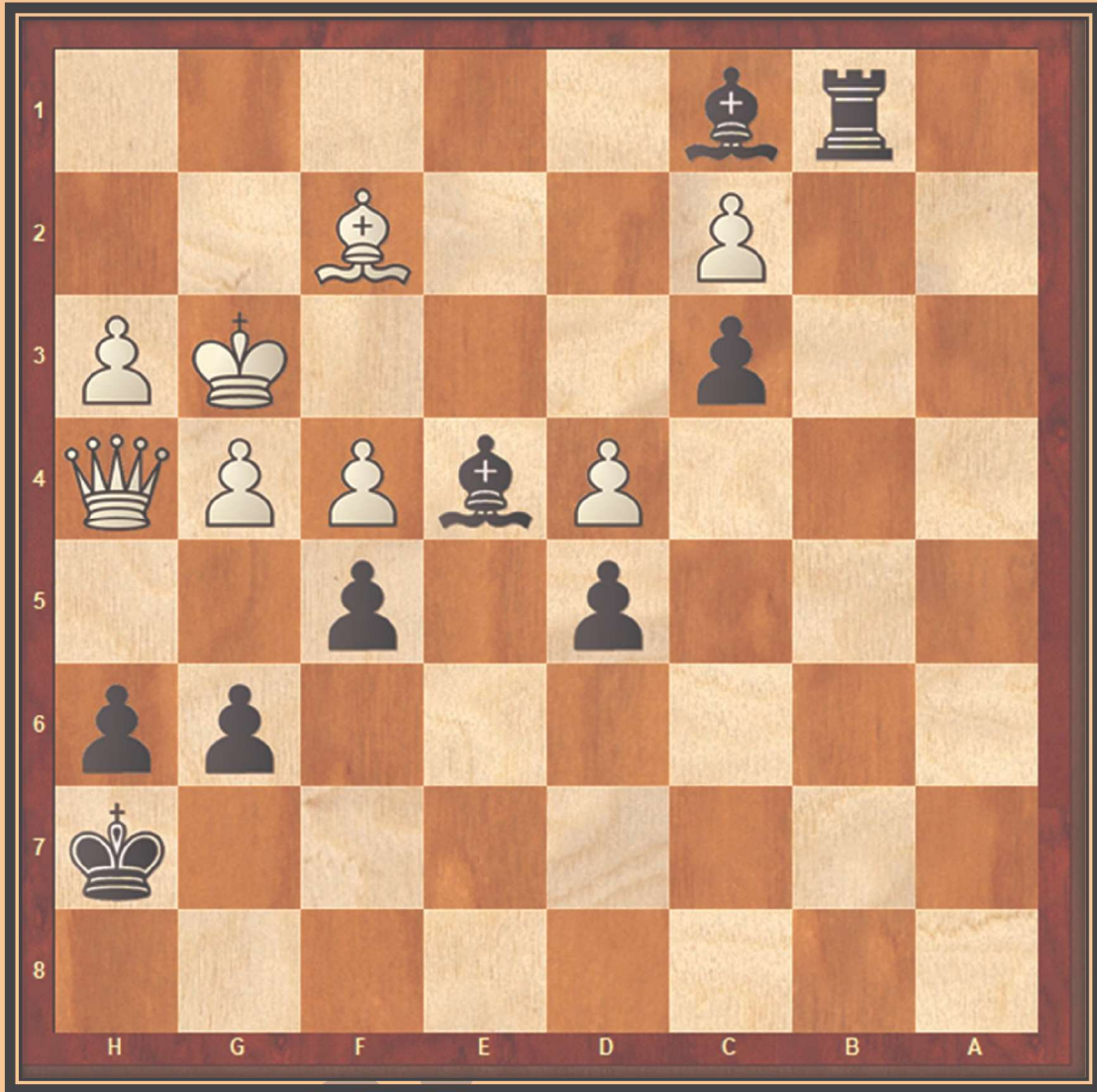
Black to Play Create a Double Attack

White	Black
1) _____	



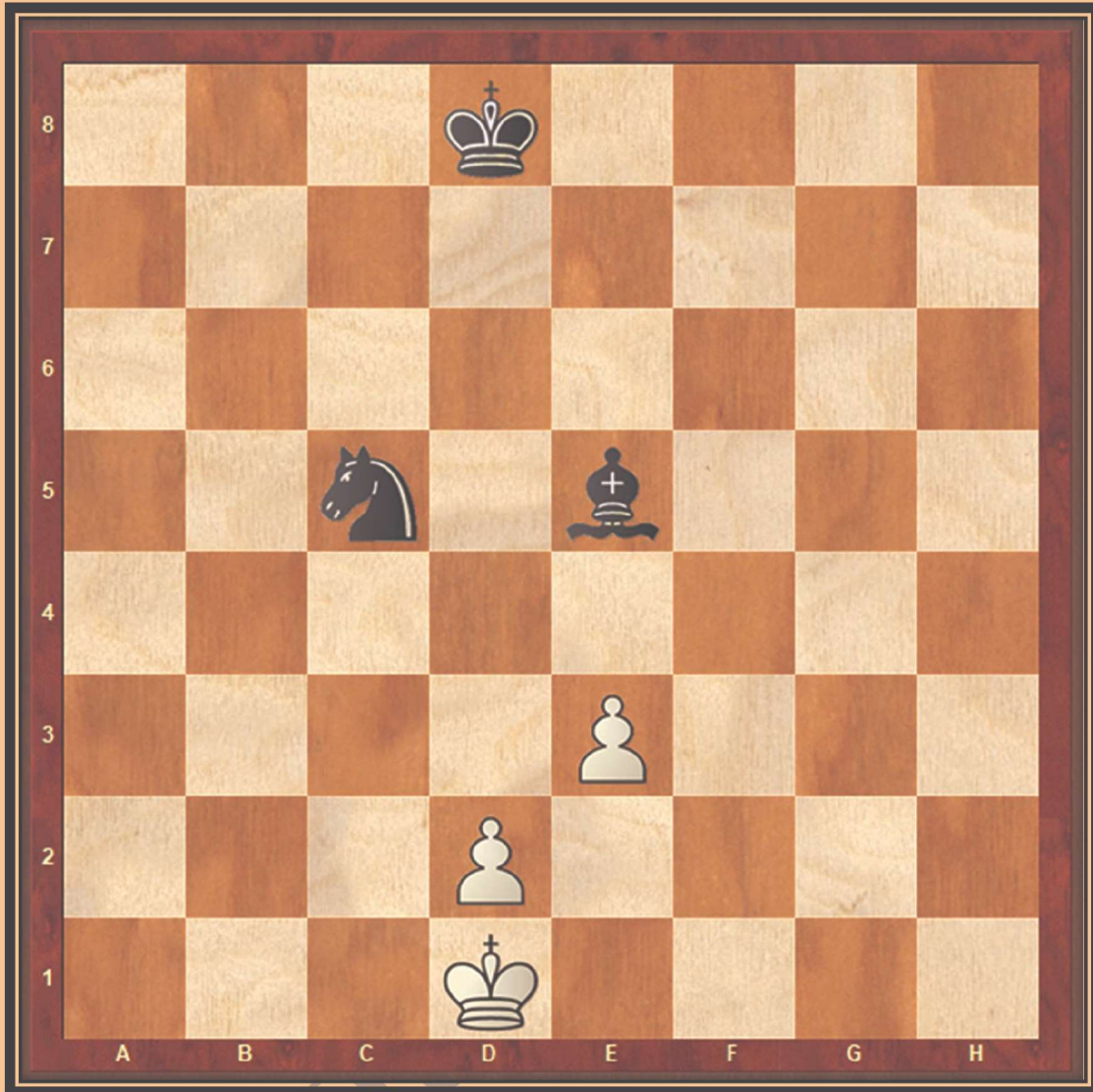
Black to Play Create a Double Attack

White	Black
1) _____	



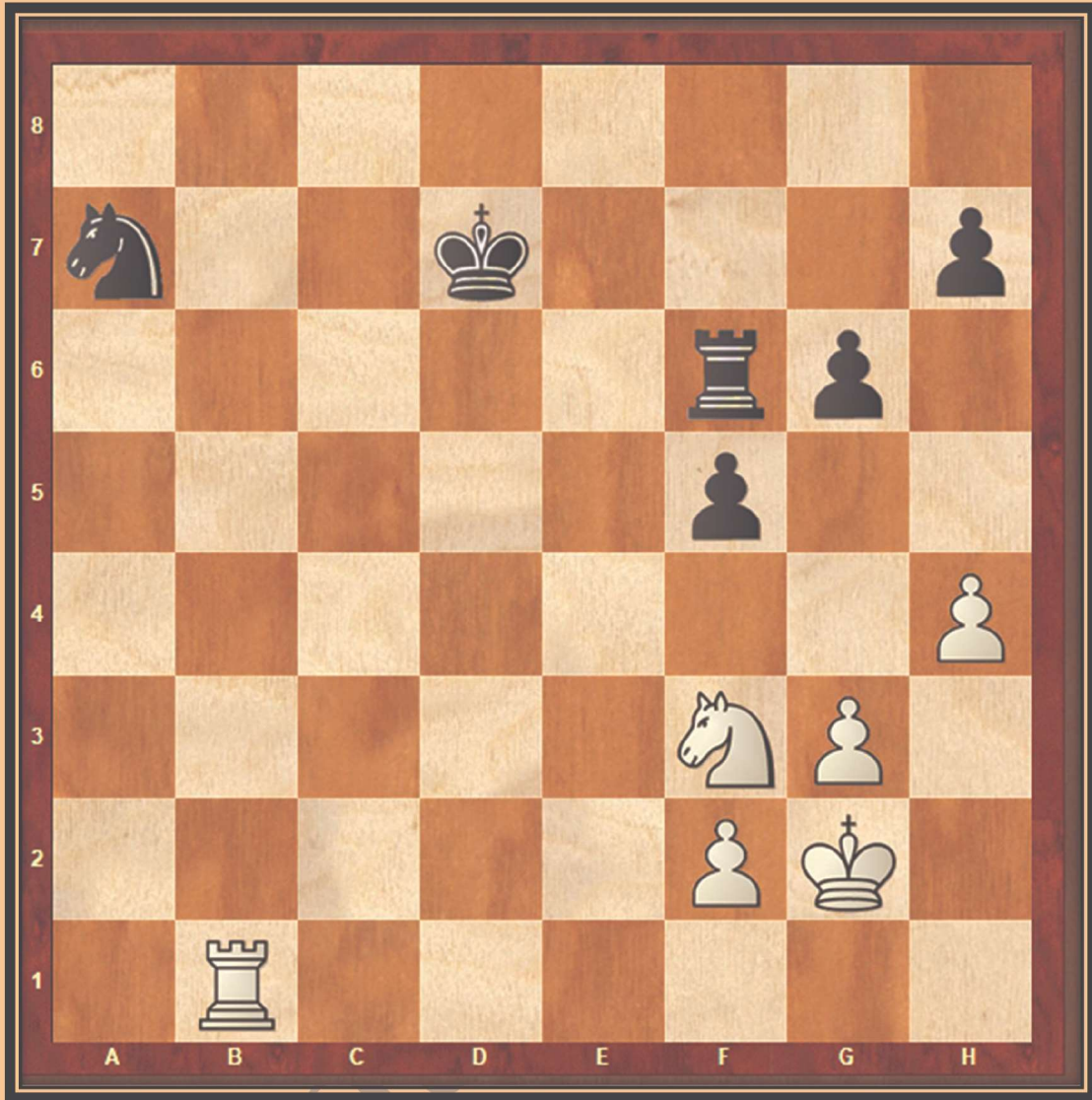
Black to Play Create a Double Attack

White	Black
1) _____	



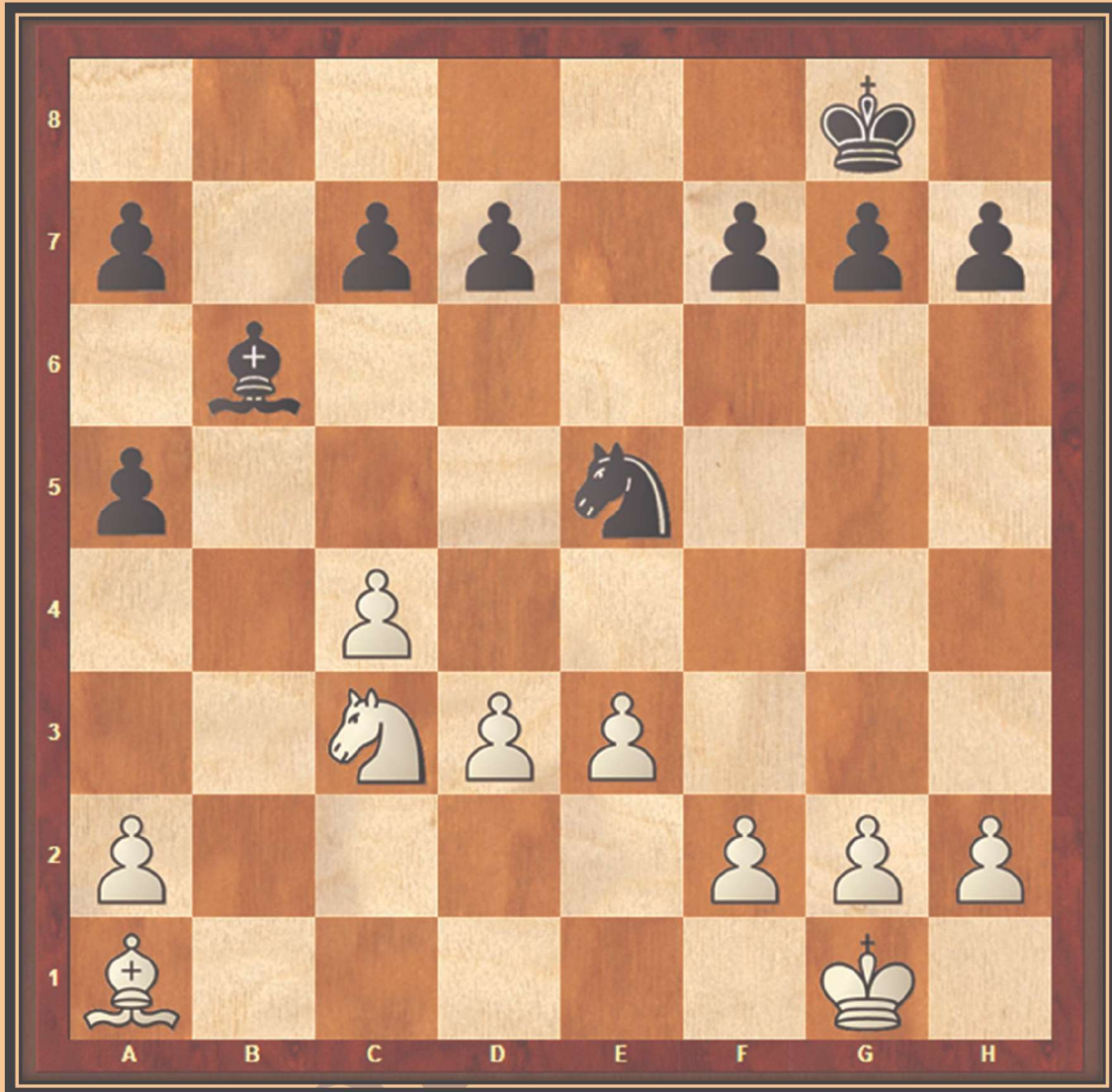
White to Play Create a Double Attack

White	Black
1) _____	



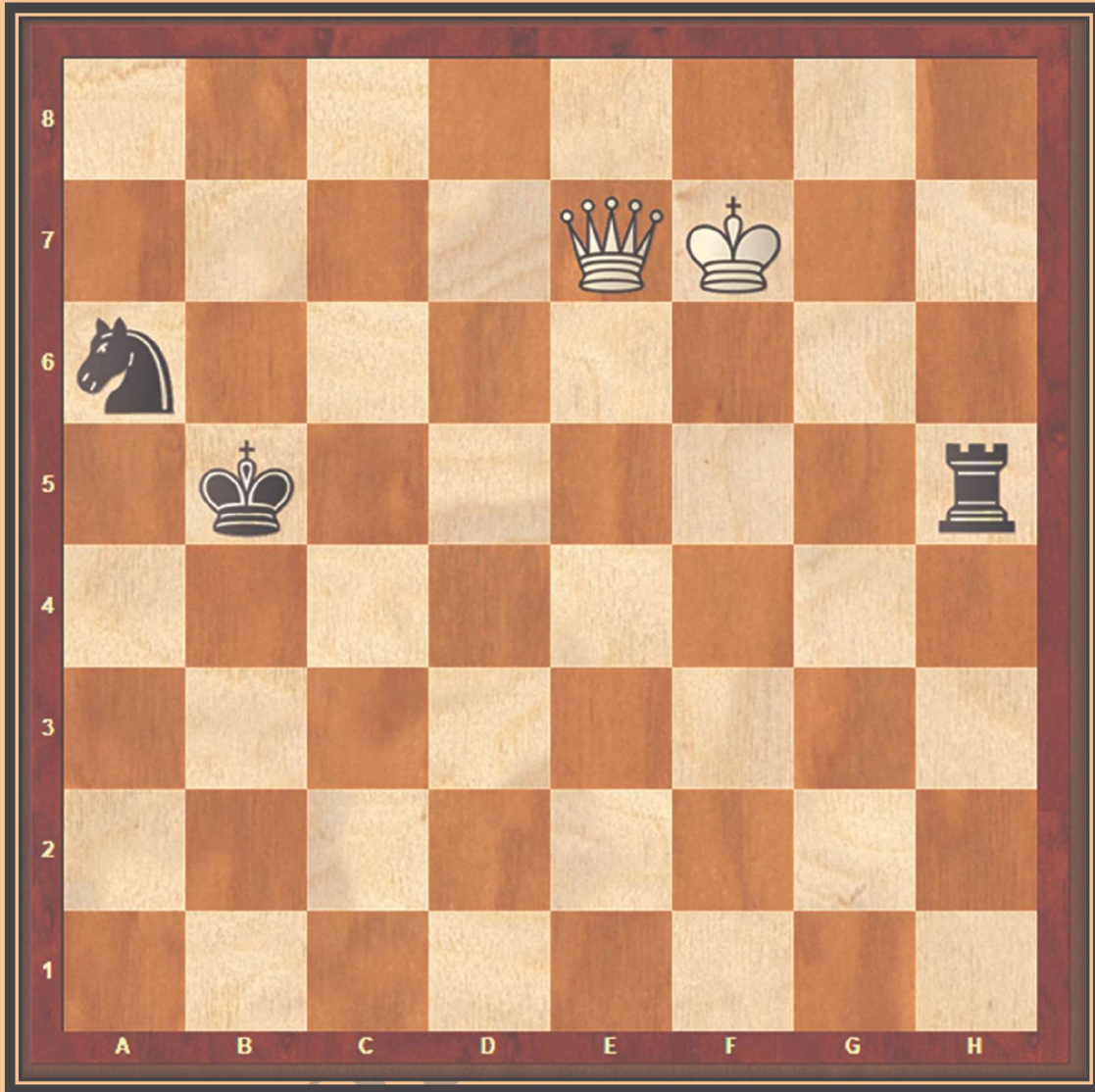
White to Play Create a Double Attack

White	Black
1) _____	



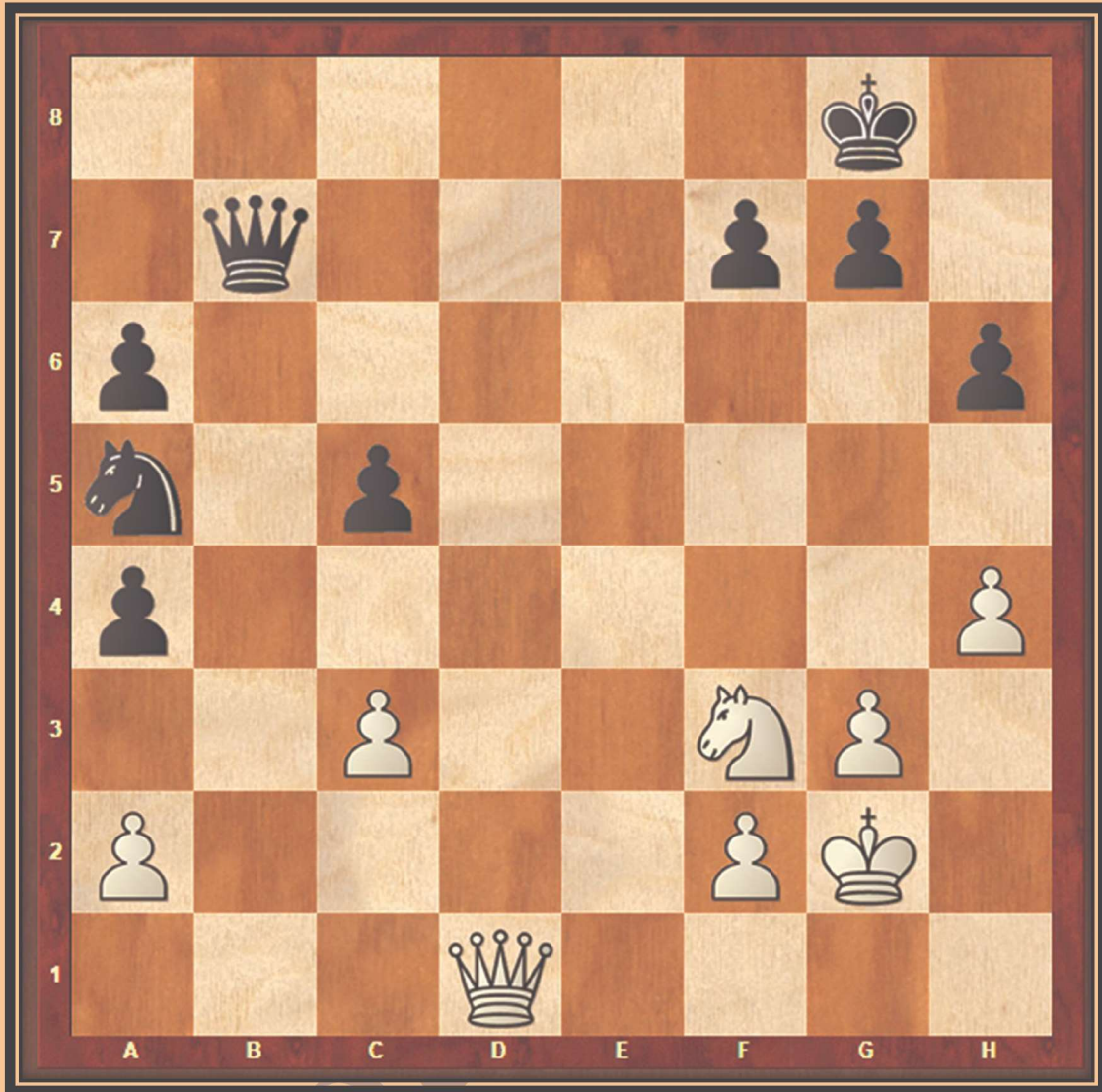
White to Play Create a Double Attack

White	Black
1) _____	



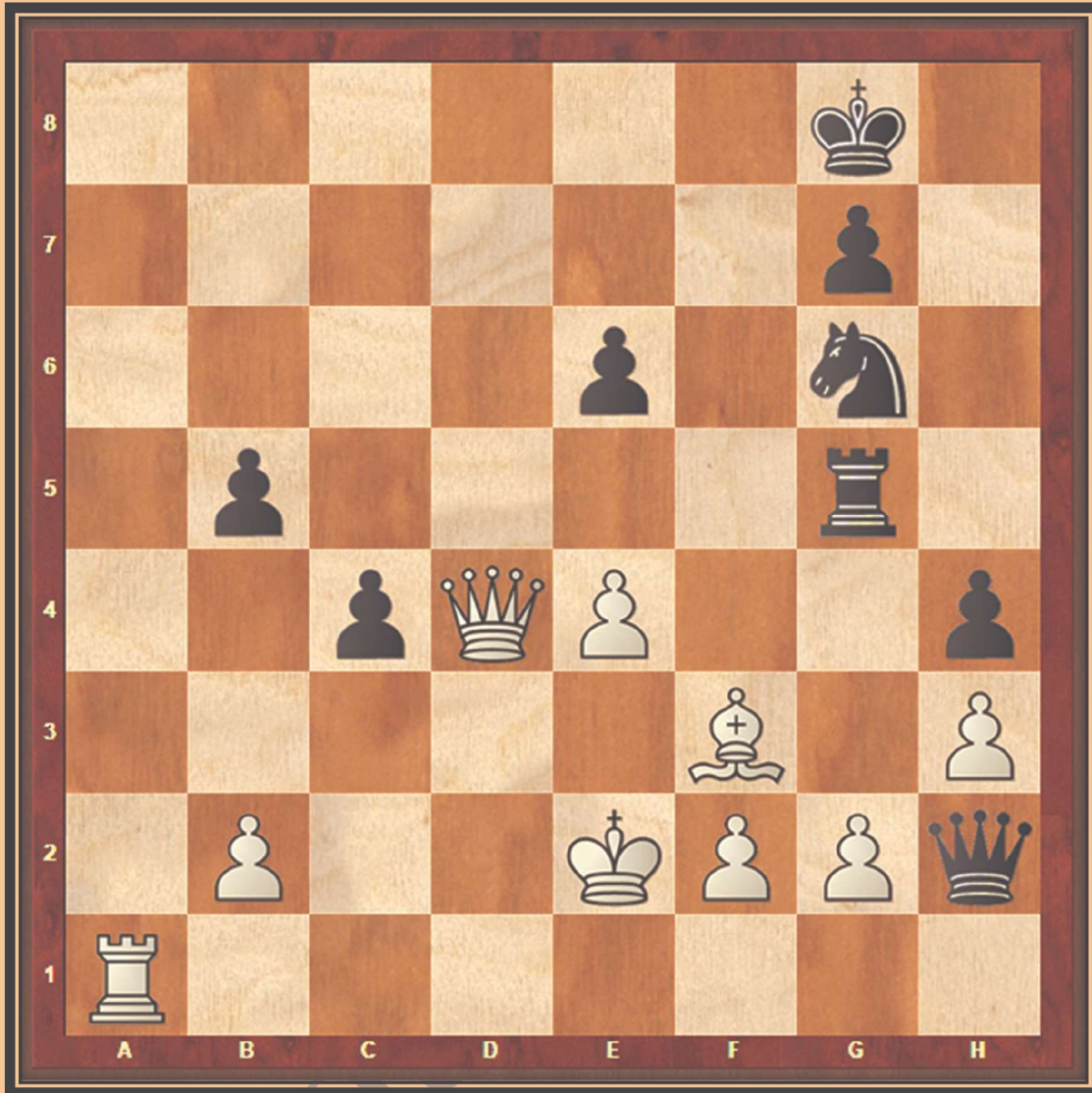
White to Play Create a Double Attack

White	Black
1) _____	



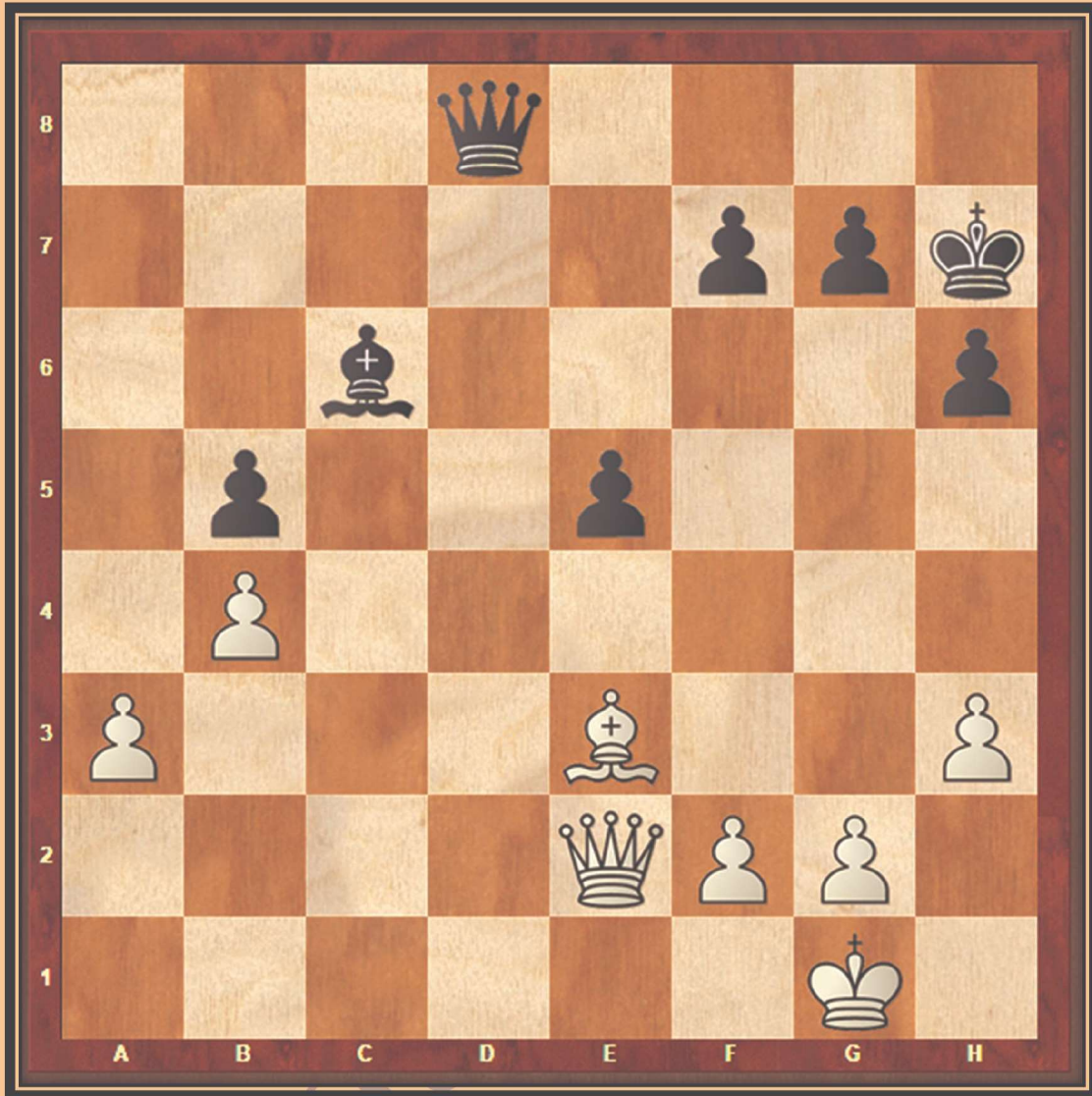
White to Play Create a Double Attack

White	Black
1) _____	



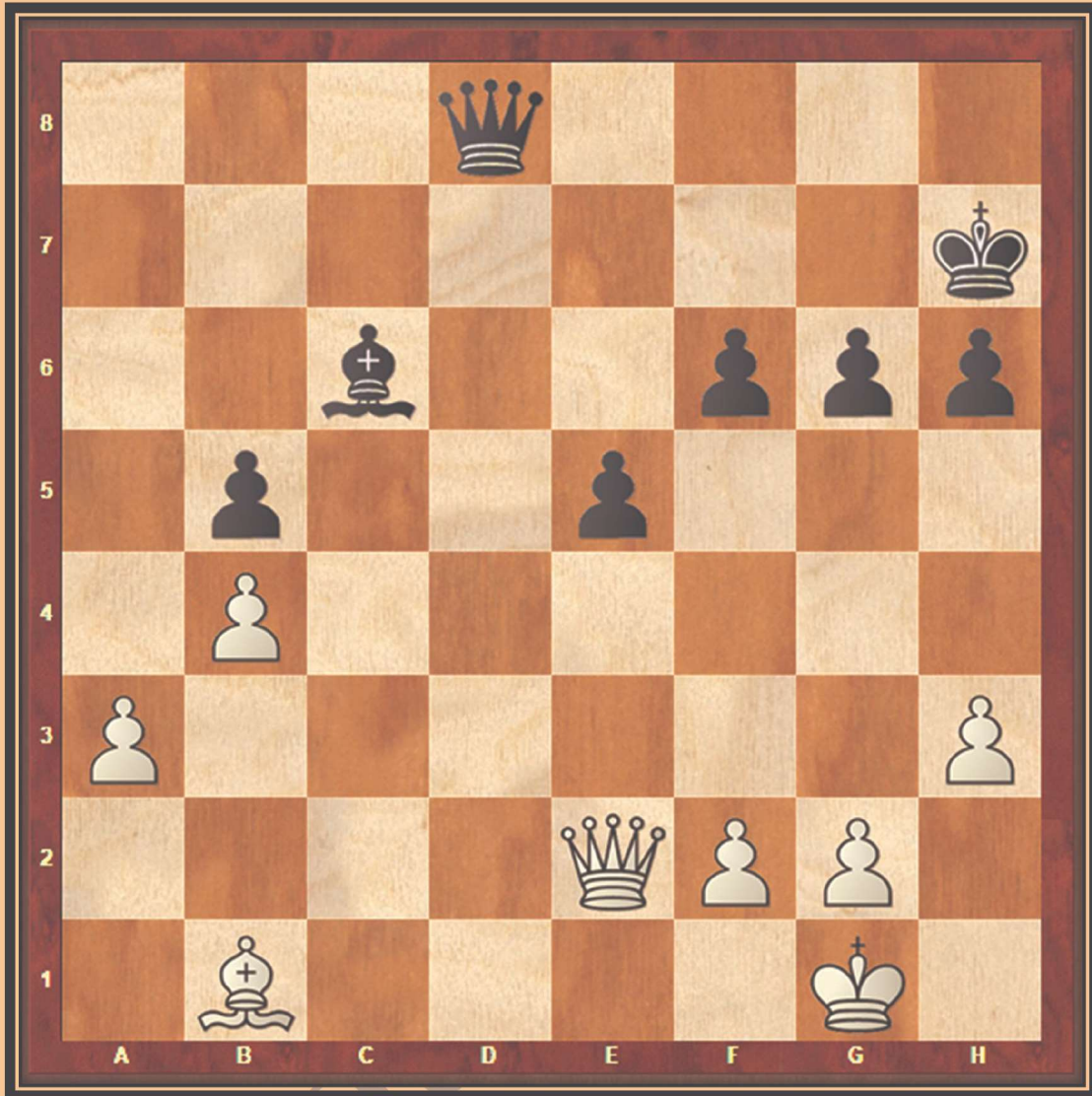
White to Play Create a Double Attack

White	Black
1) _____	



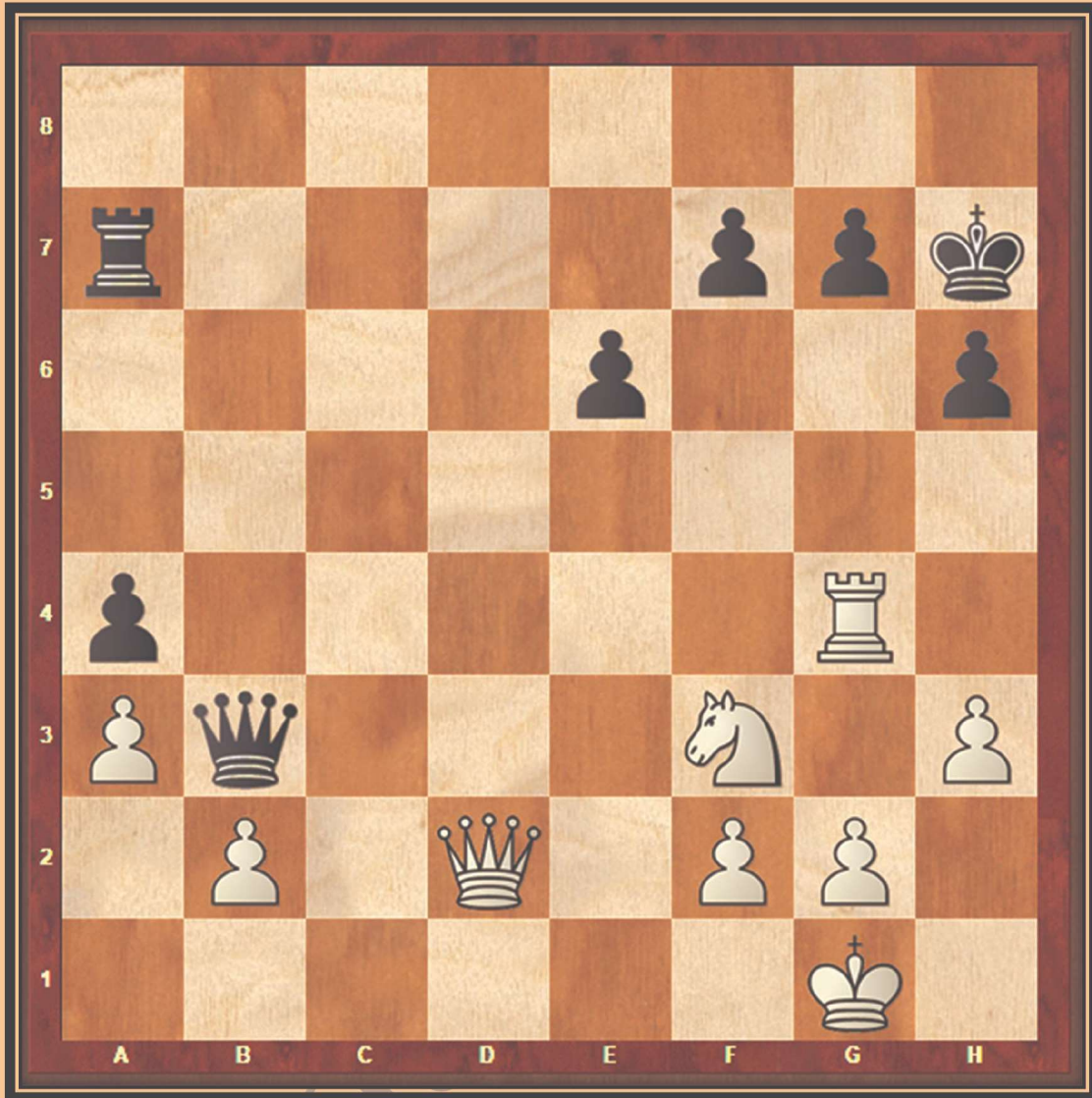
White to Play Create a Double Attack

White	Black
1) _____	



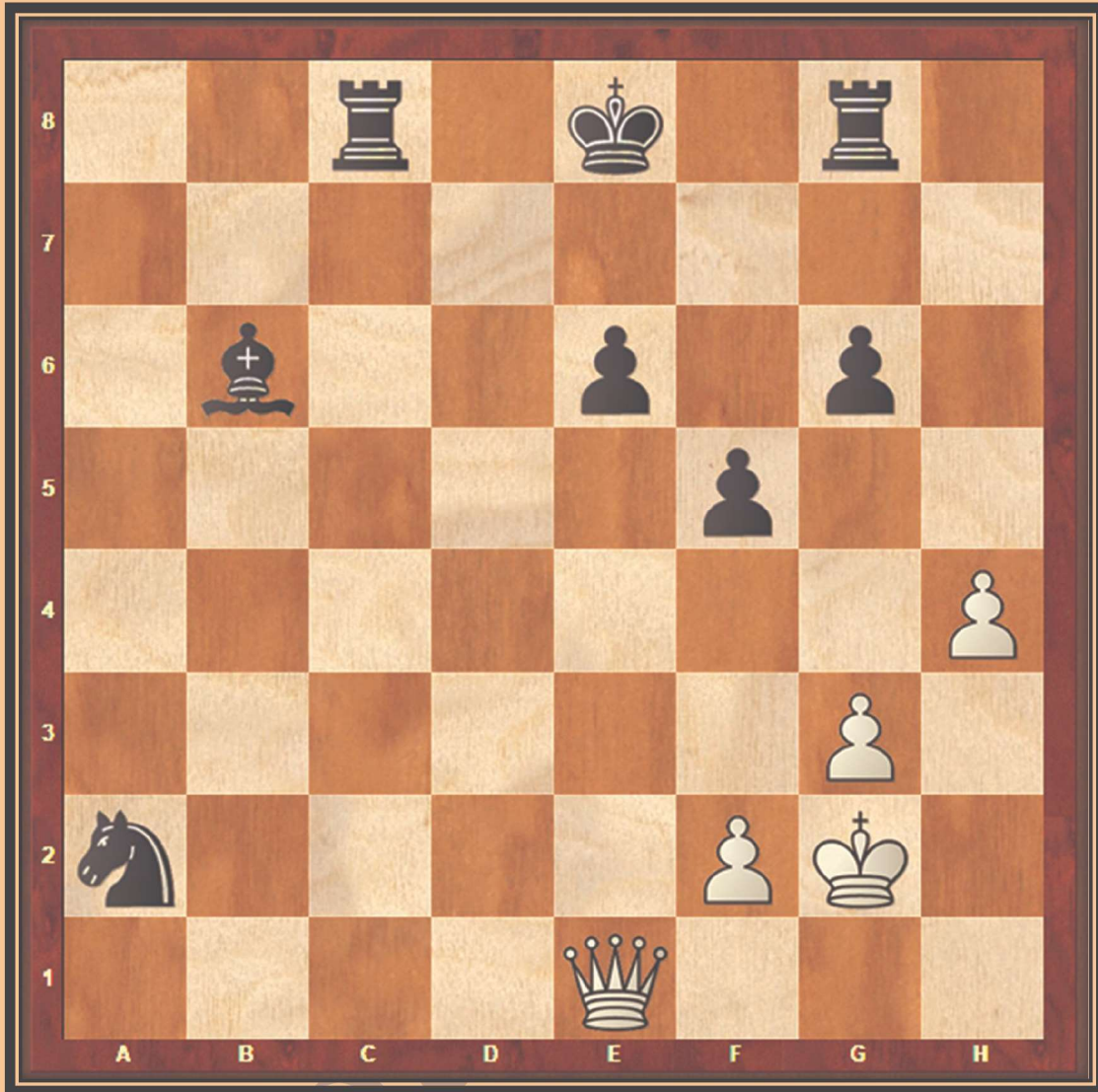
White to Play Create a Double Attack

White	Black
1) _____	



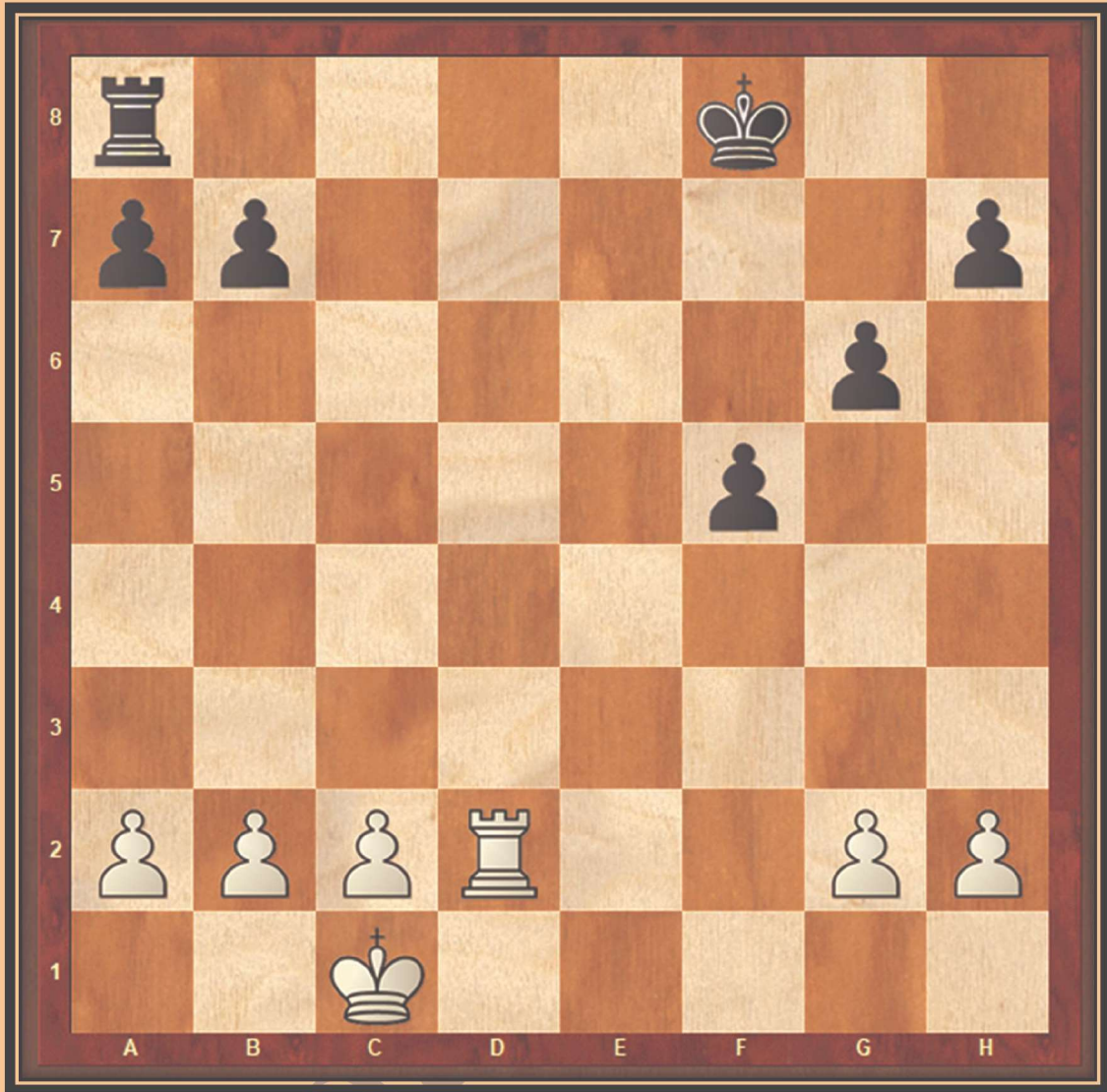
White to Play Create a Double Attack

White	Black
1) _____	



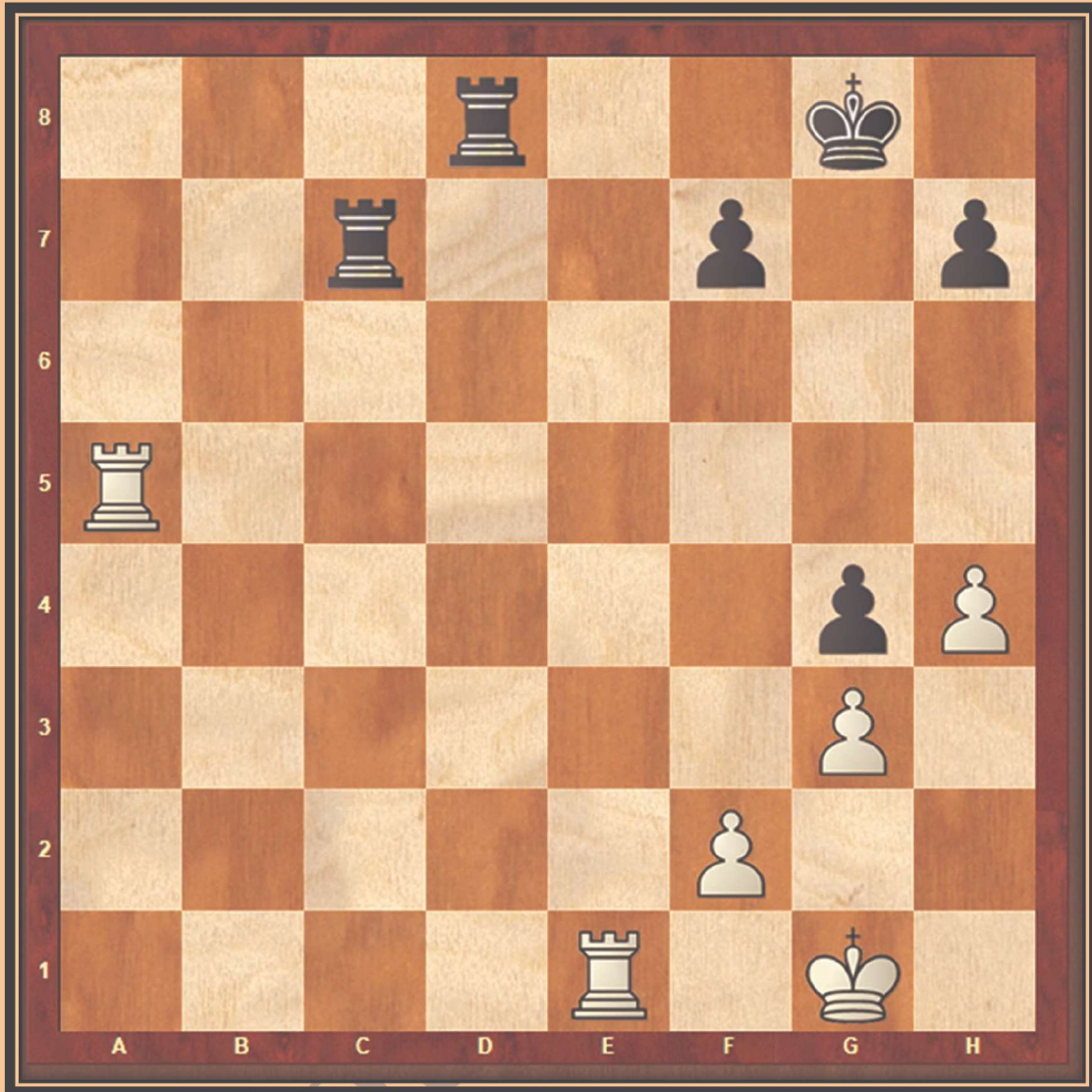
White to Play Create a Double Attack

White	Black
1) _____	



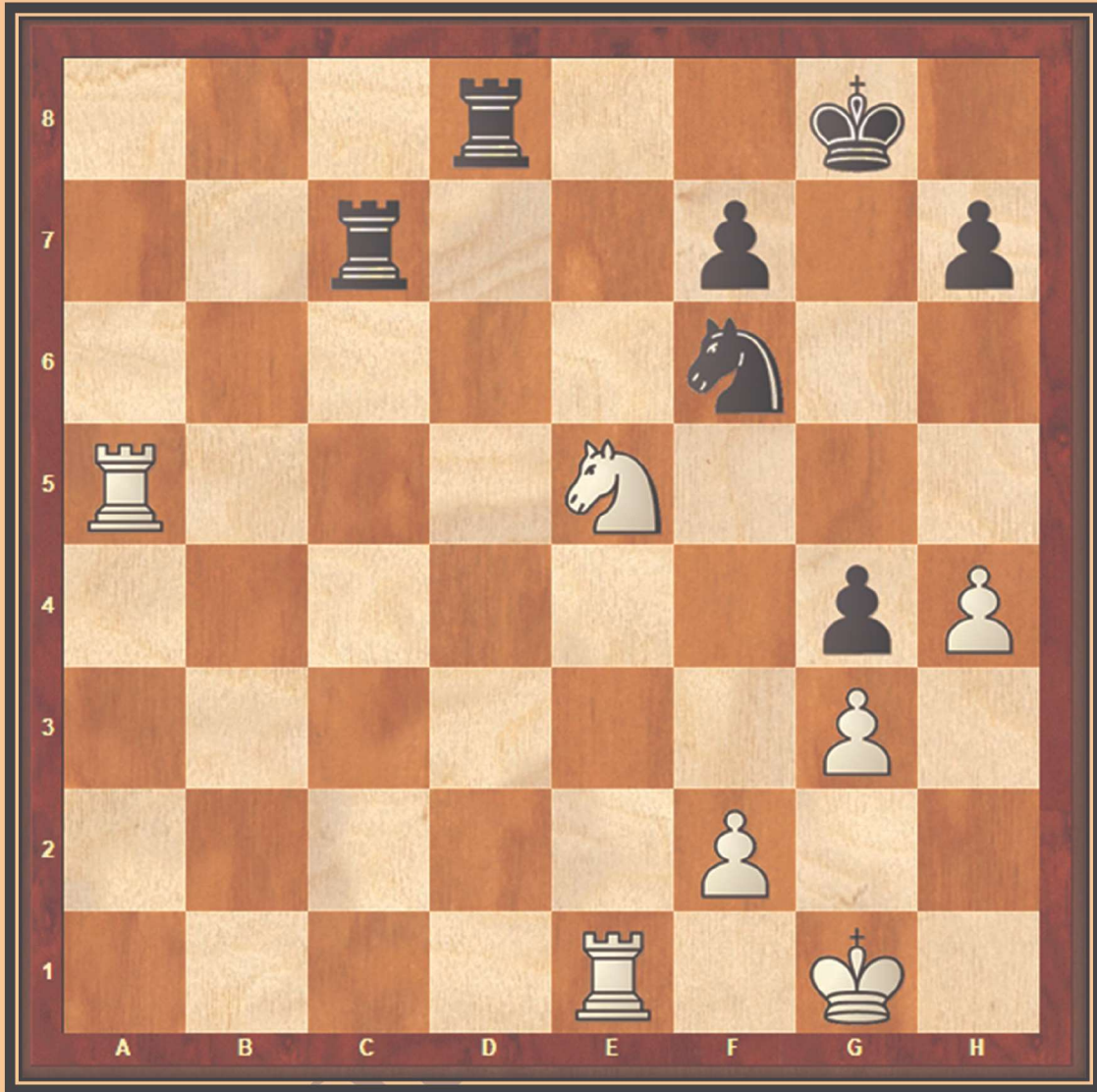
White to Play Create a Double Attack

White	Black
1) _____	



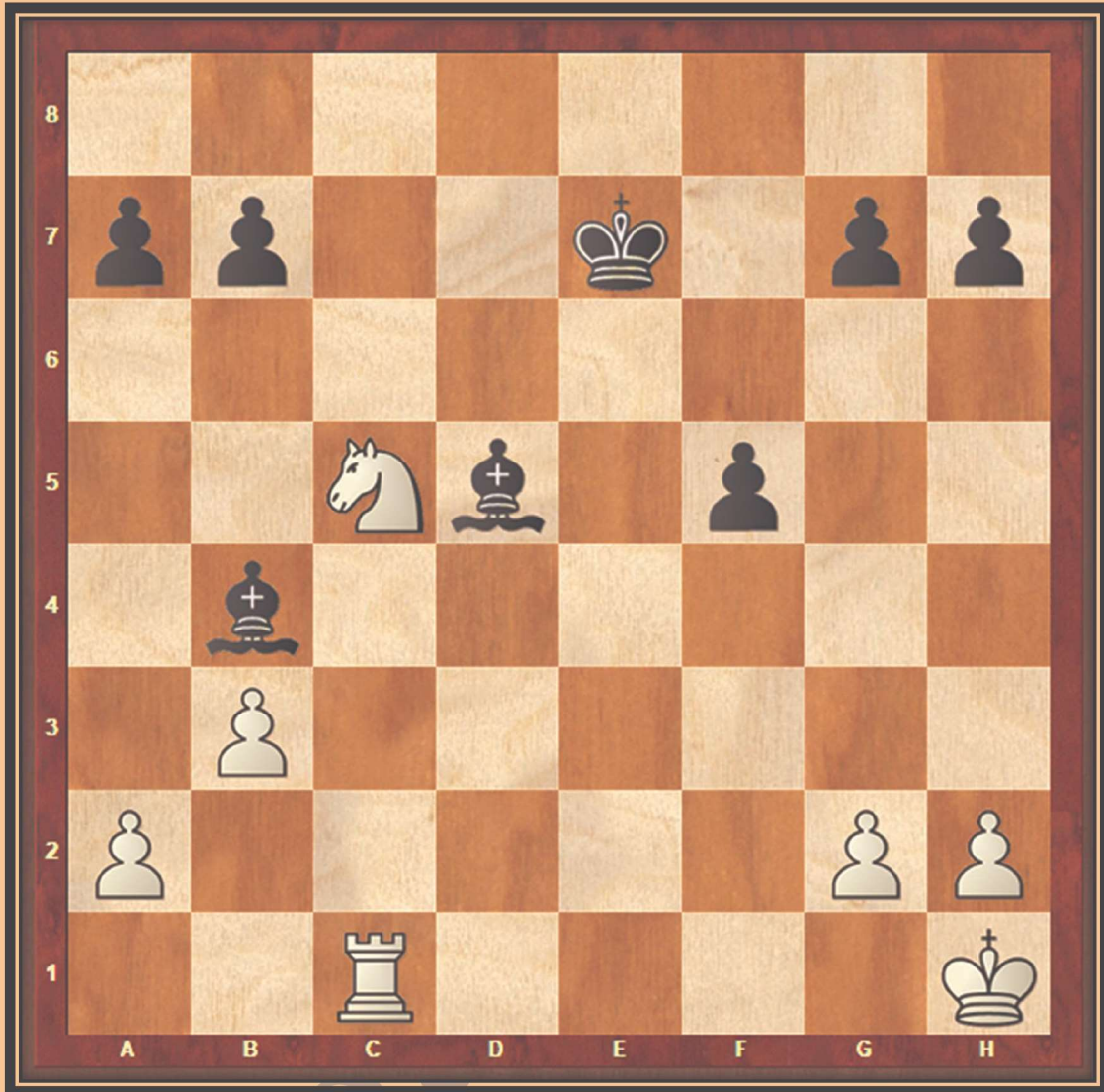
White to Play Create a Double Attack

White	Black
1) _____	



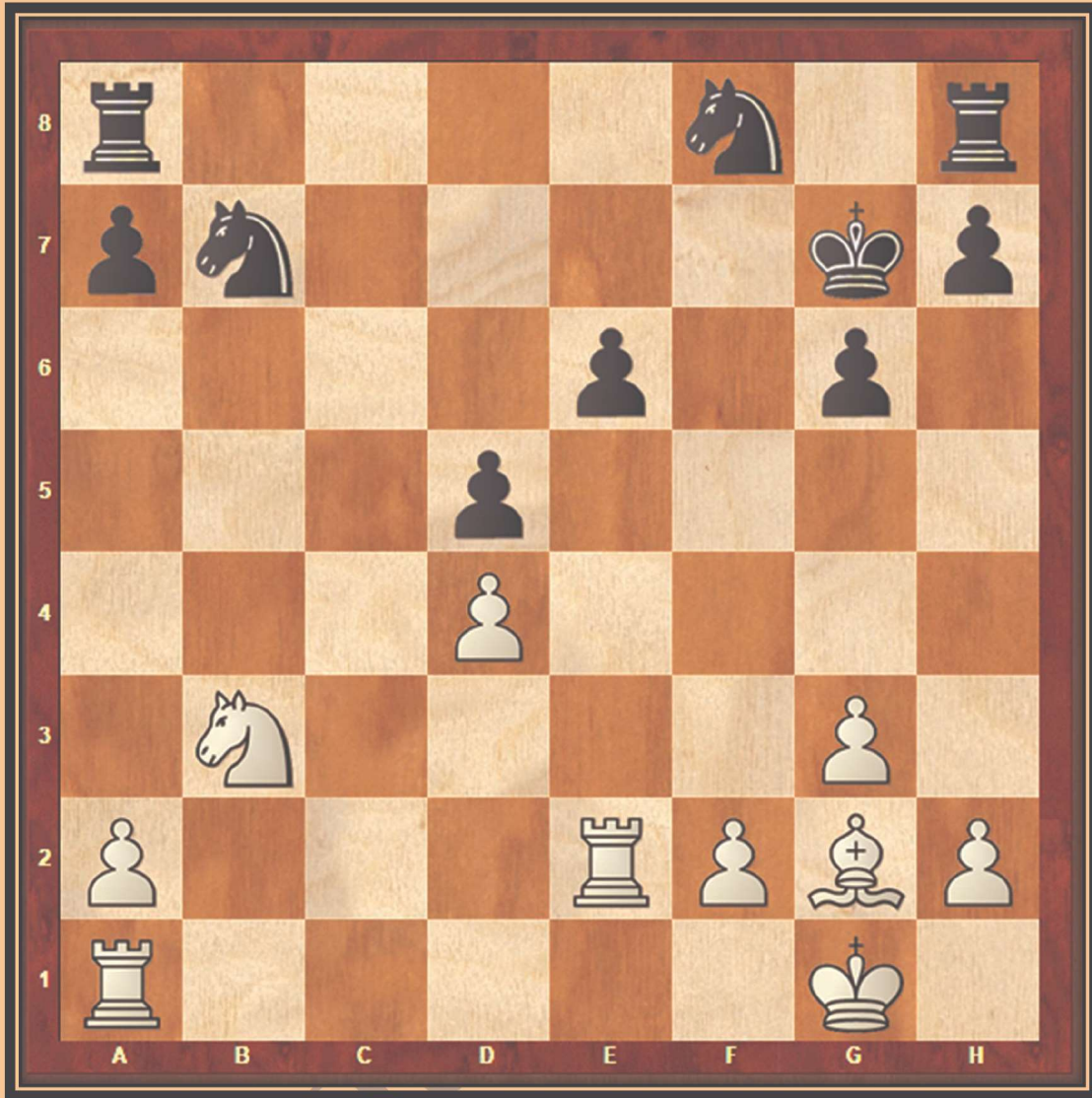
White to Play Create a Double Attack

White	Black
1) _____	



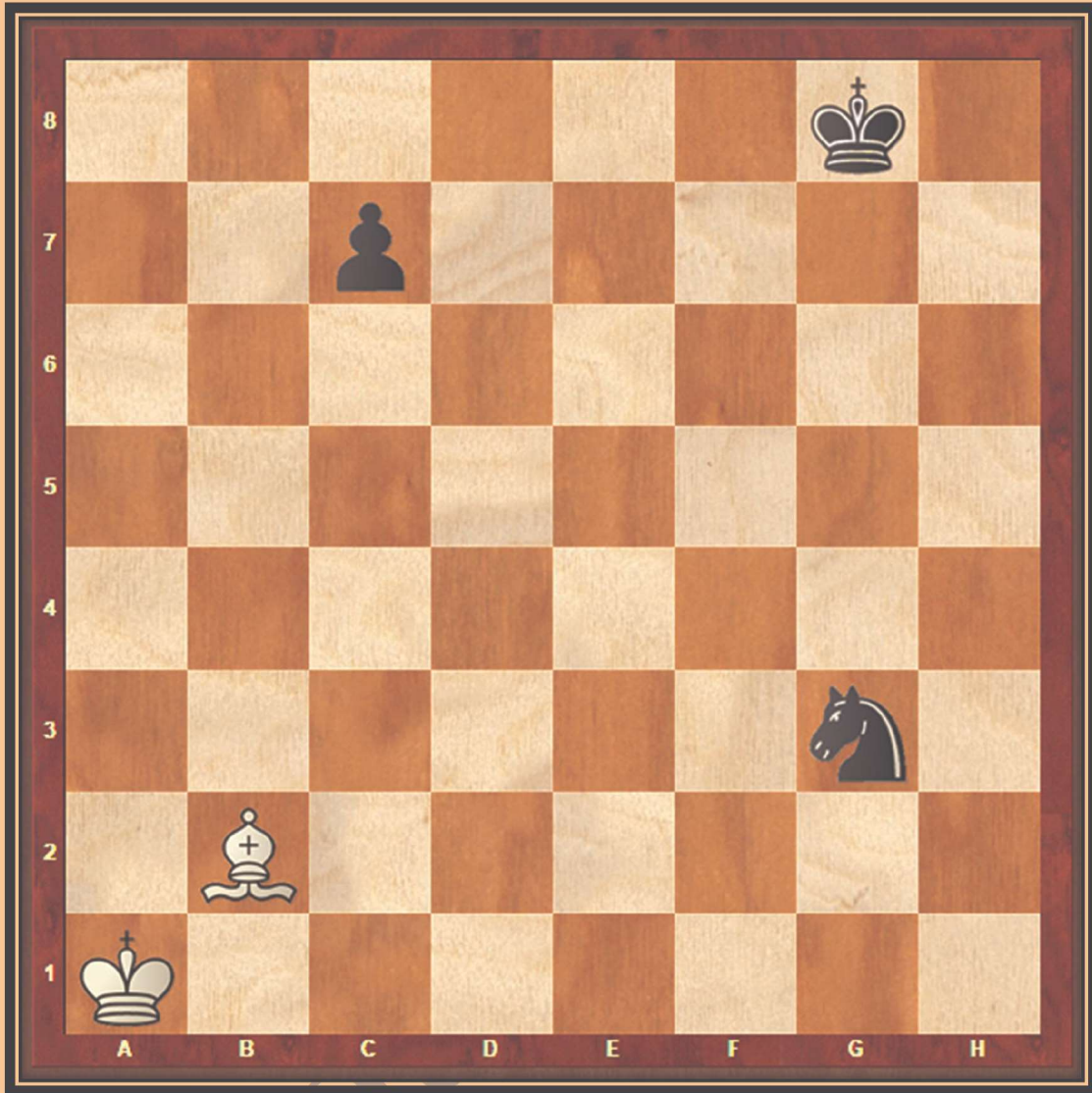
White to Play Create a Double Attack

White	Black
1) _____	



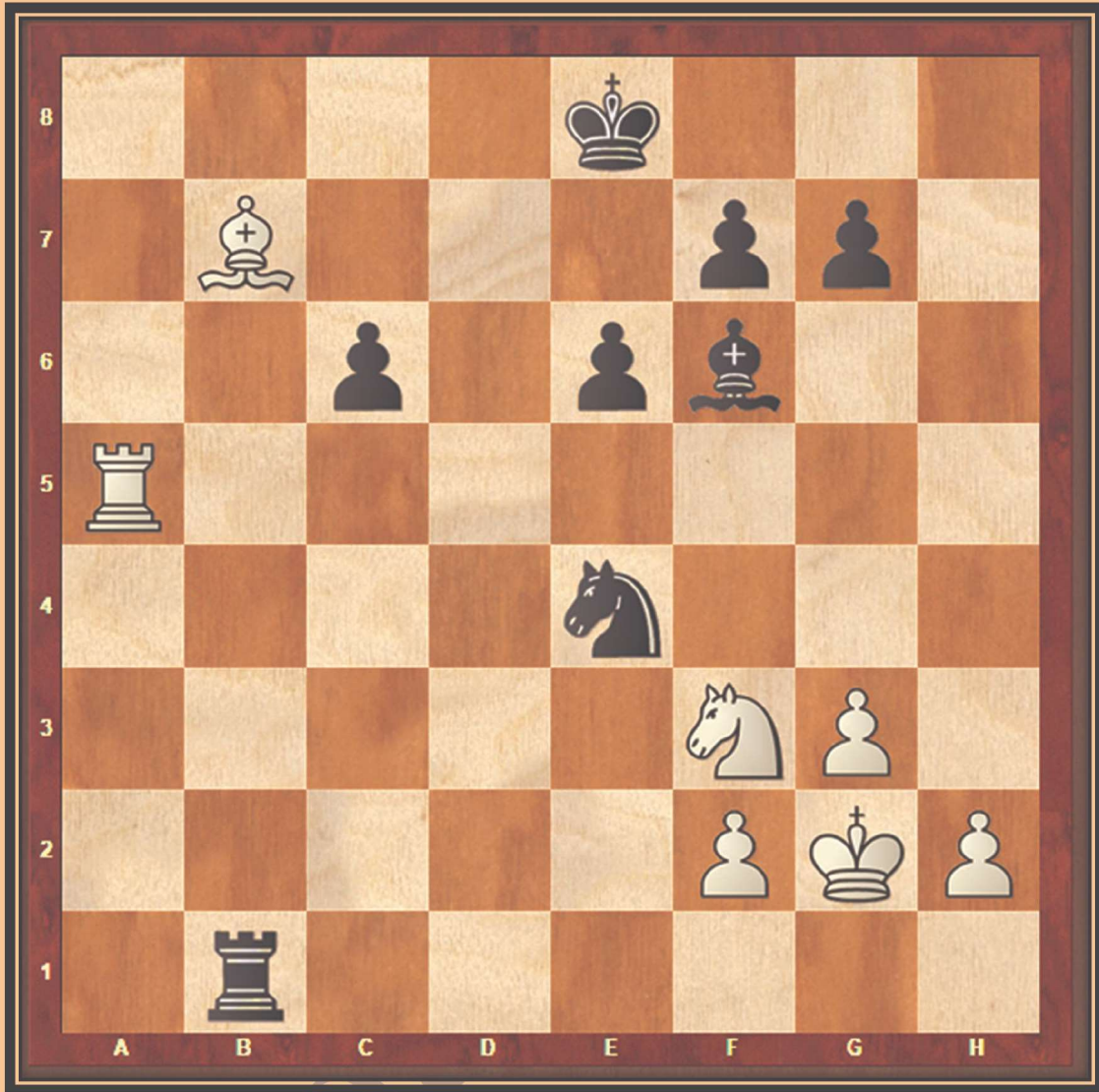
White to Play Create a Double Attack

White	Black
1) _____	



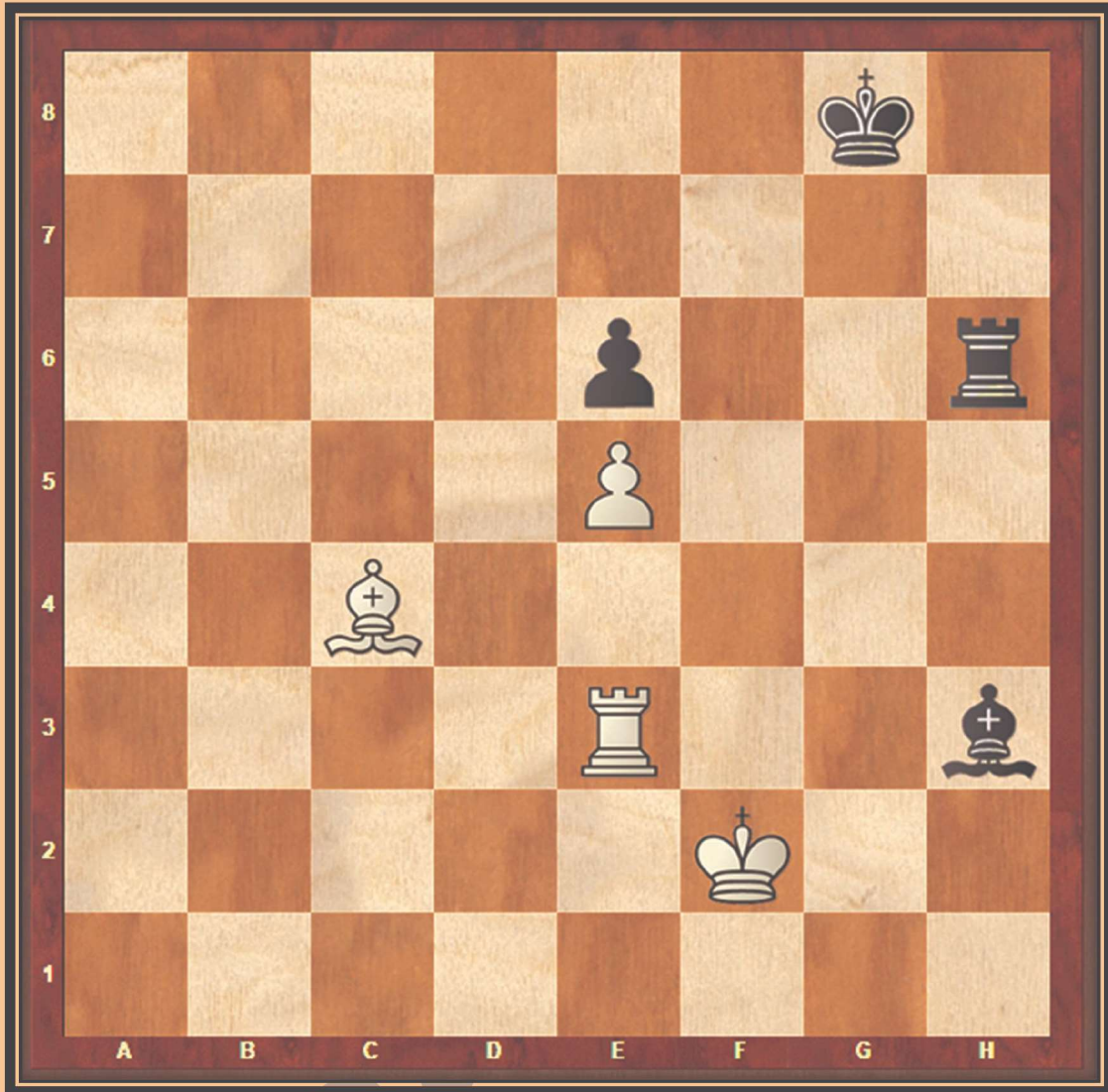
White to Play Create a Double Attack

White	Black
1) _____	



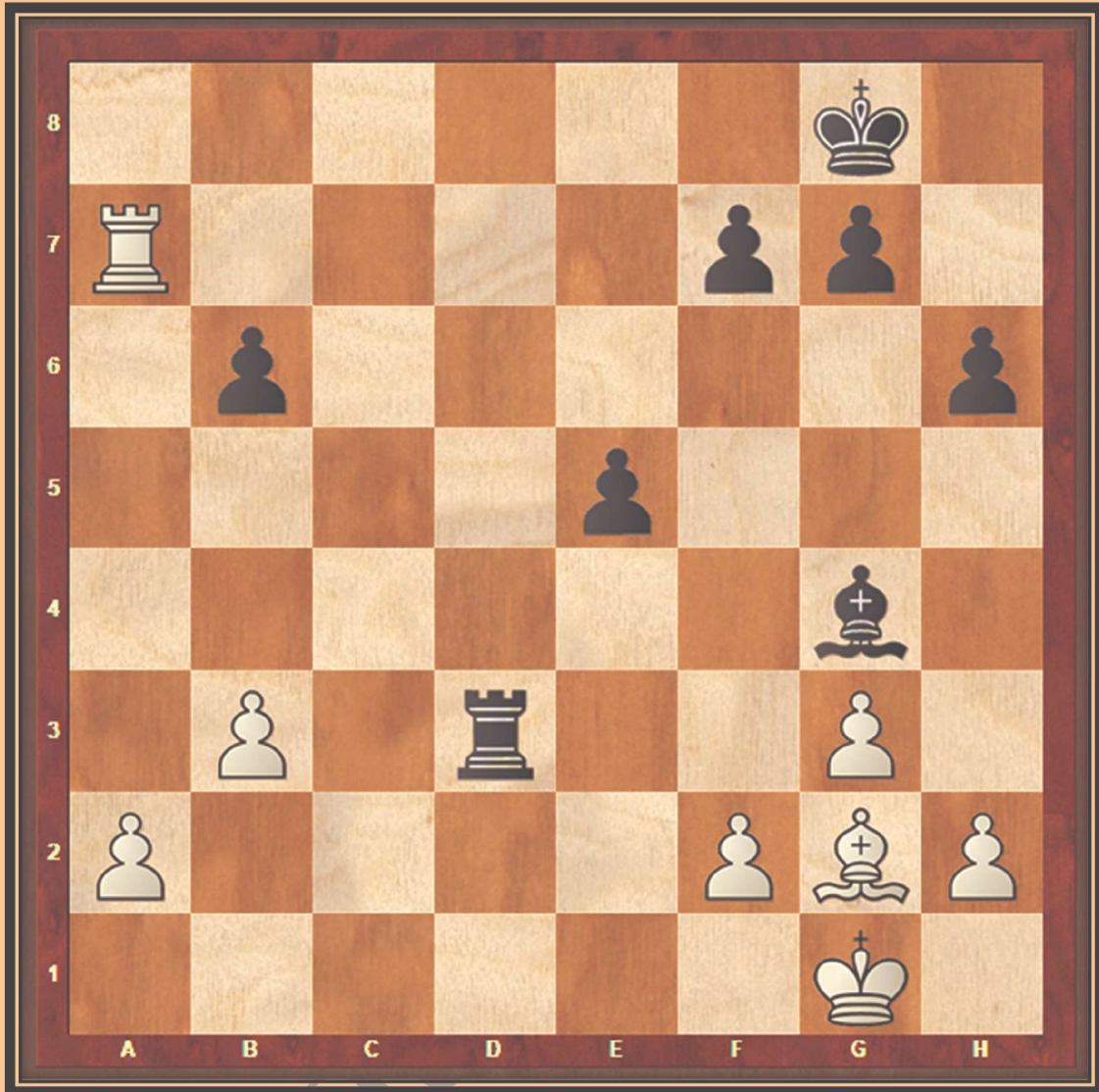
White to Play Create a Double Attack

White	Black
1) _____	



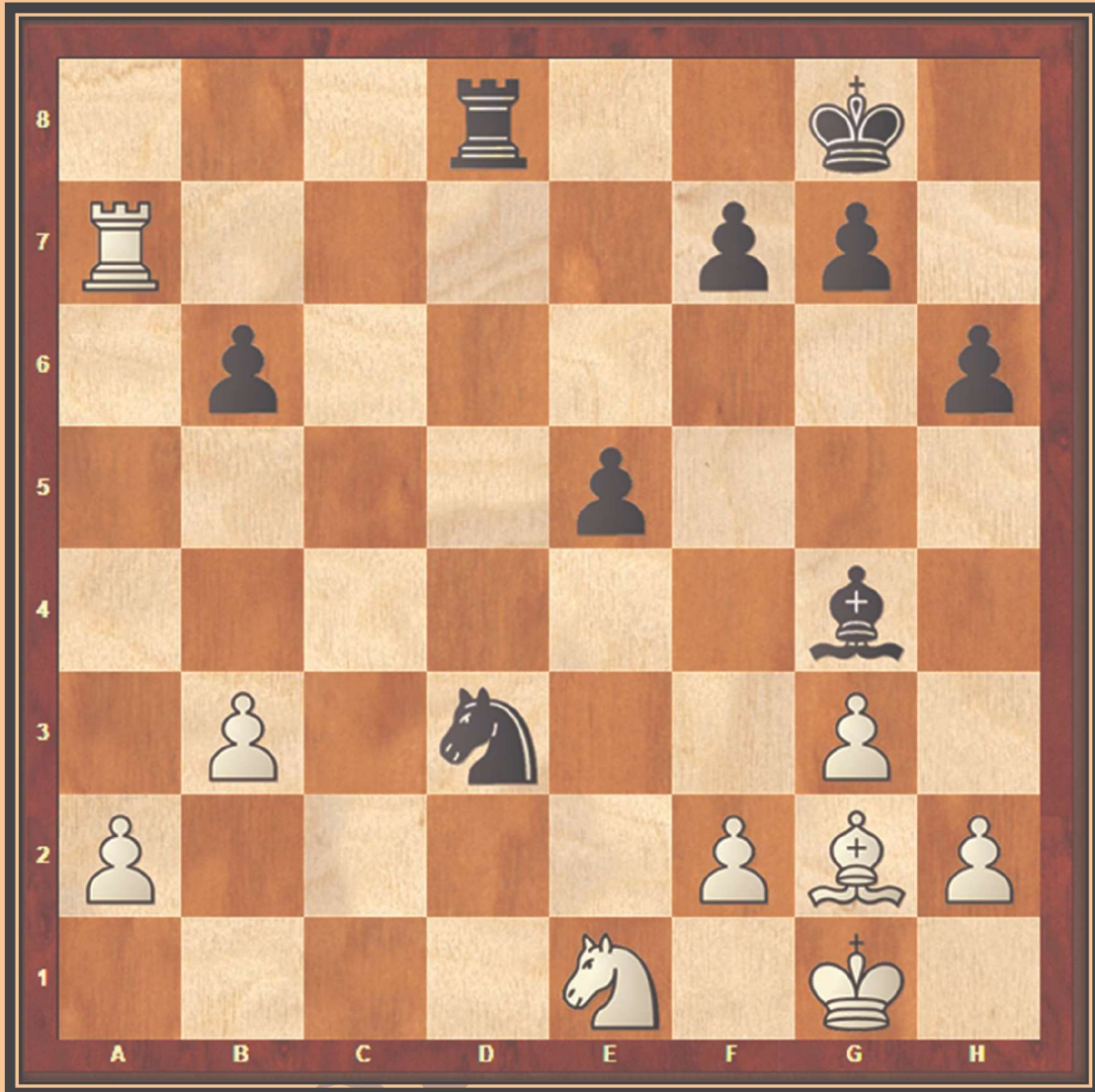
White to Play Create a Double Attack

White	Black
1) _____	



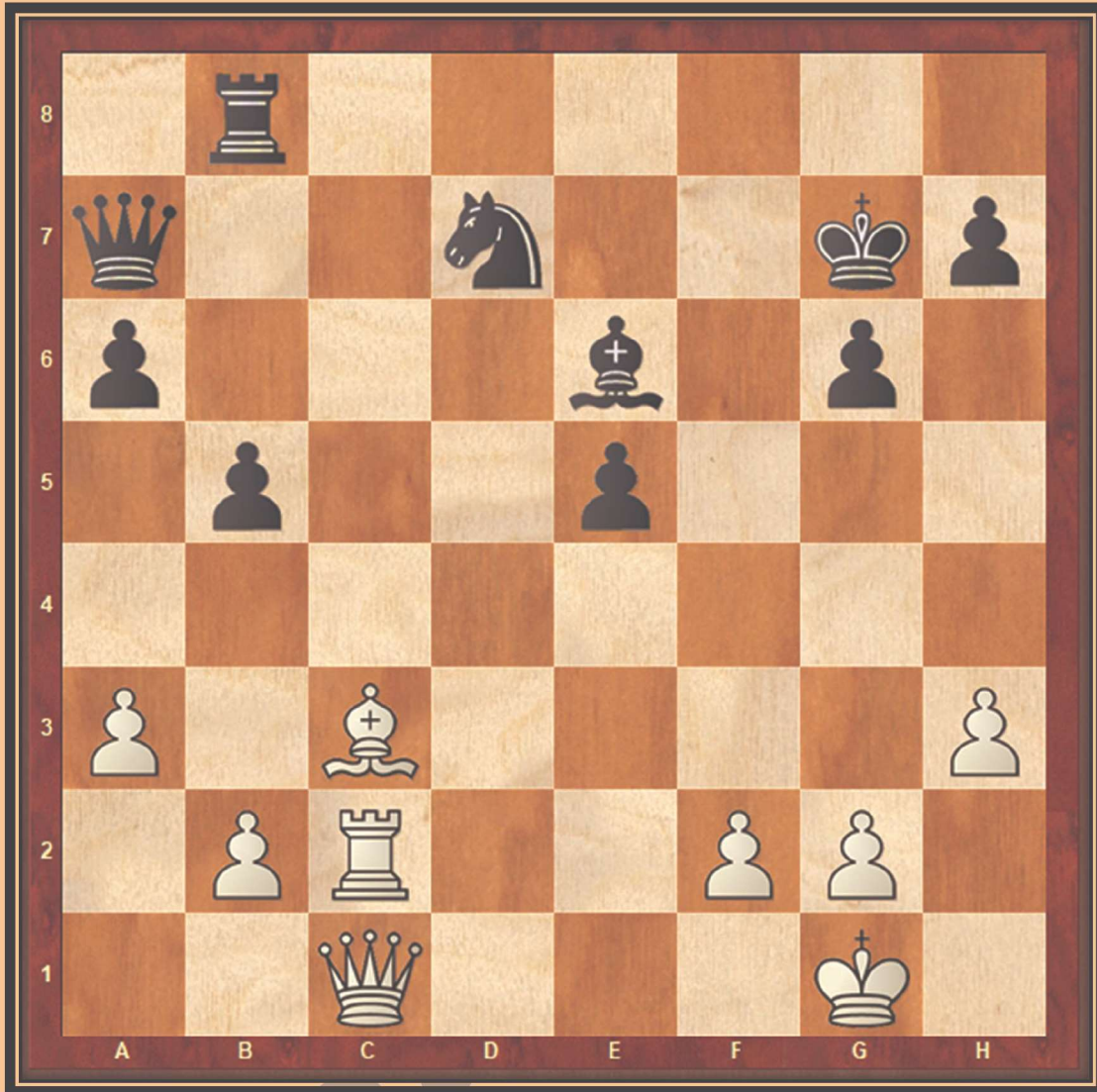
White to Play Create a Double Attack

White	Black
1) _____	



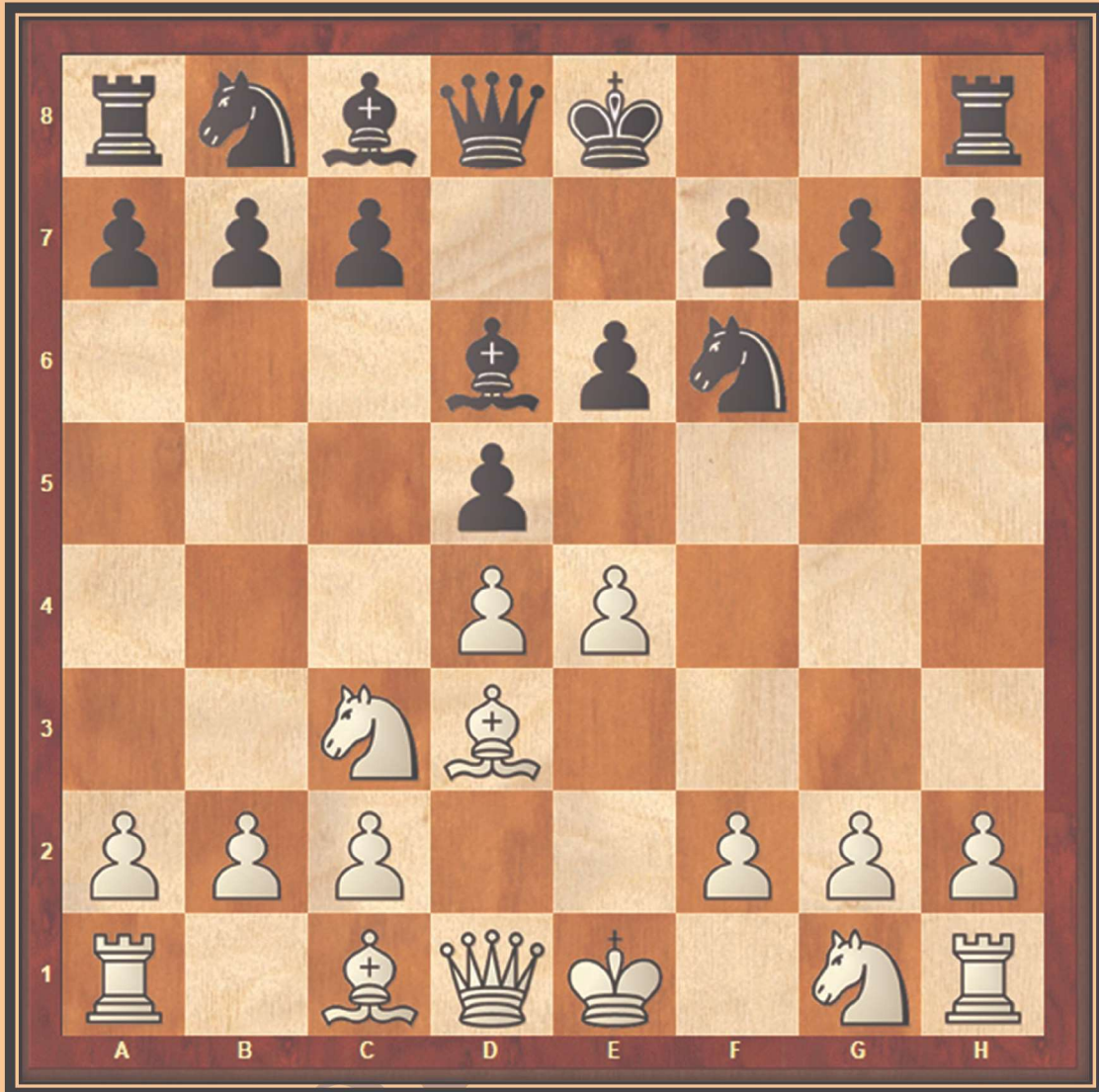
White to Play Create a Double Attack

White	Black
1) _____	



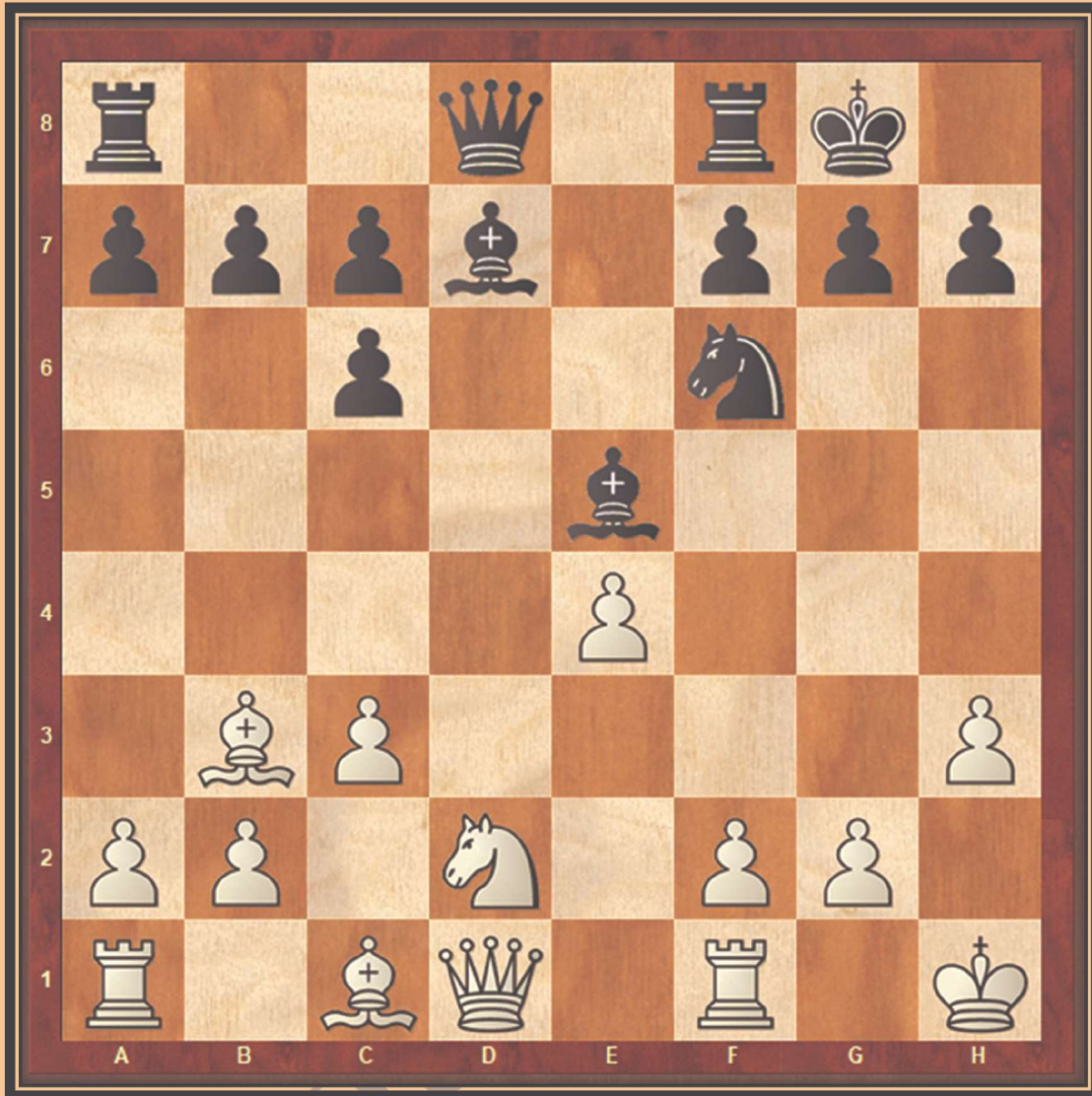
White to Play Create a Double Attack

White	Black
1) _____	



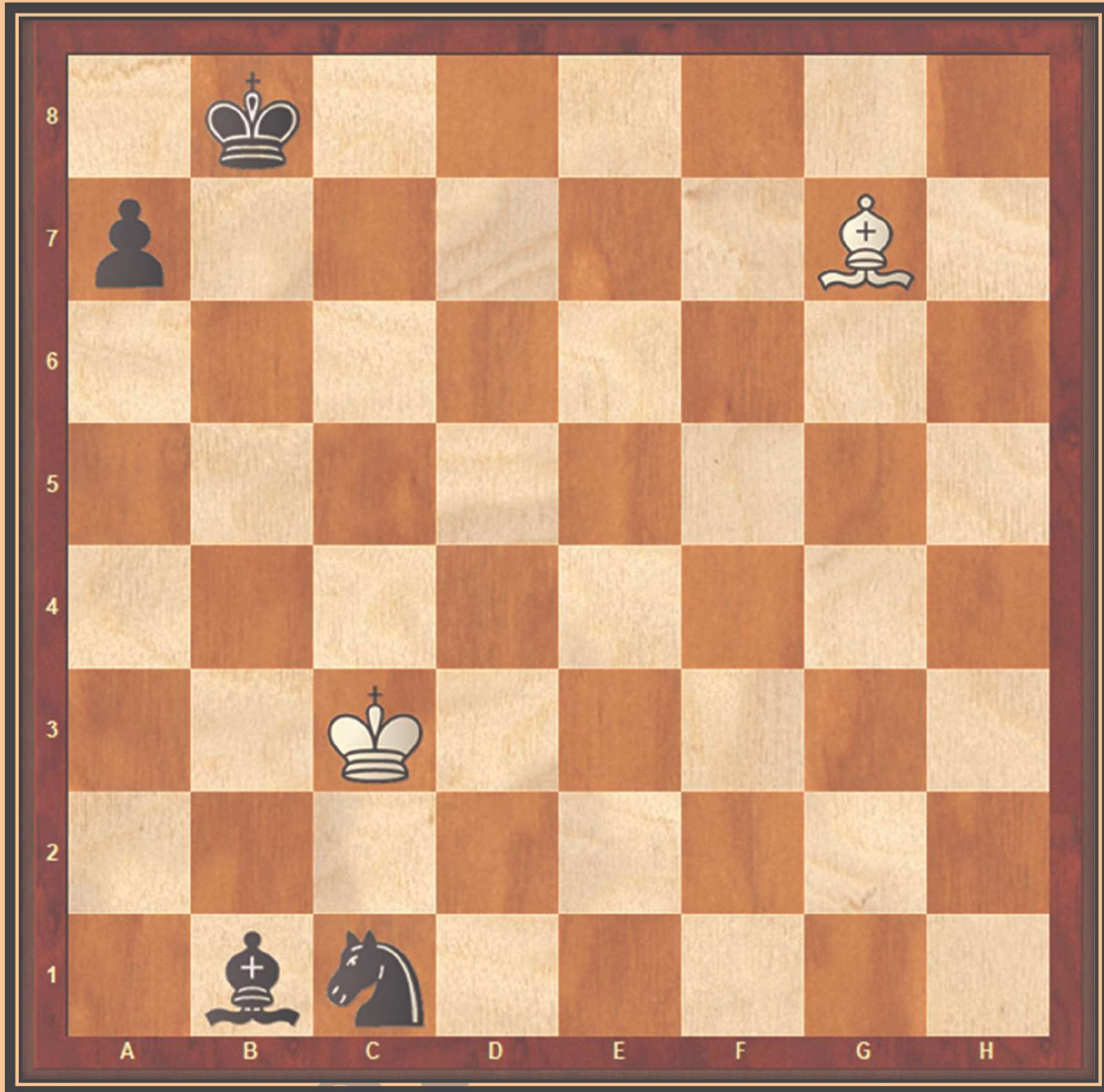
White to Play Create a Double Attack

White	Black
1) _____	



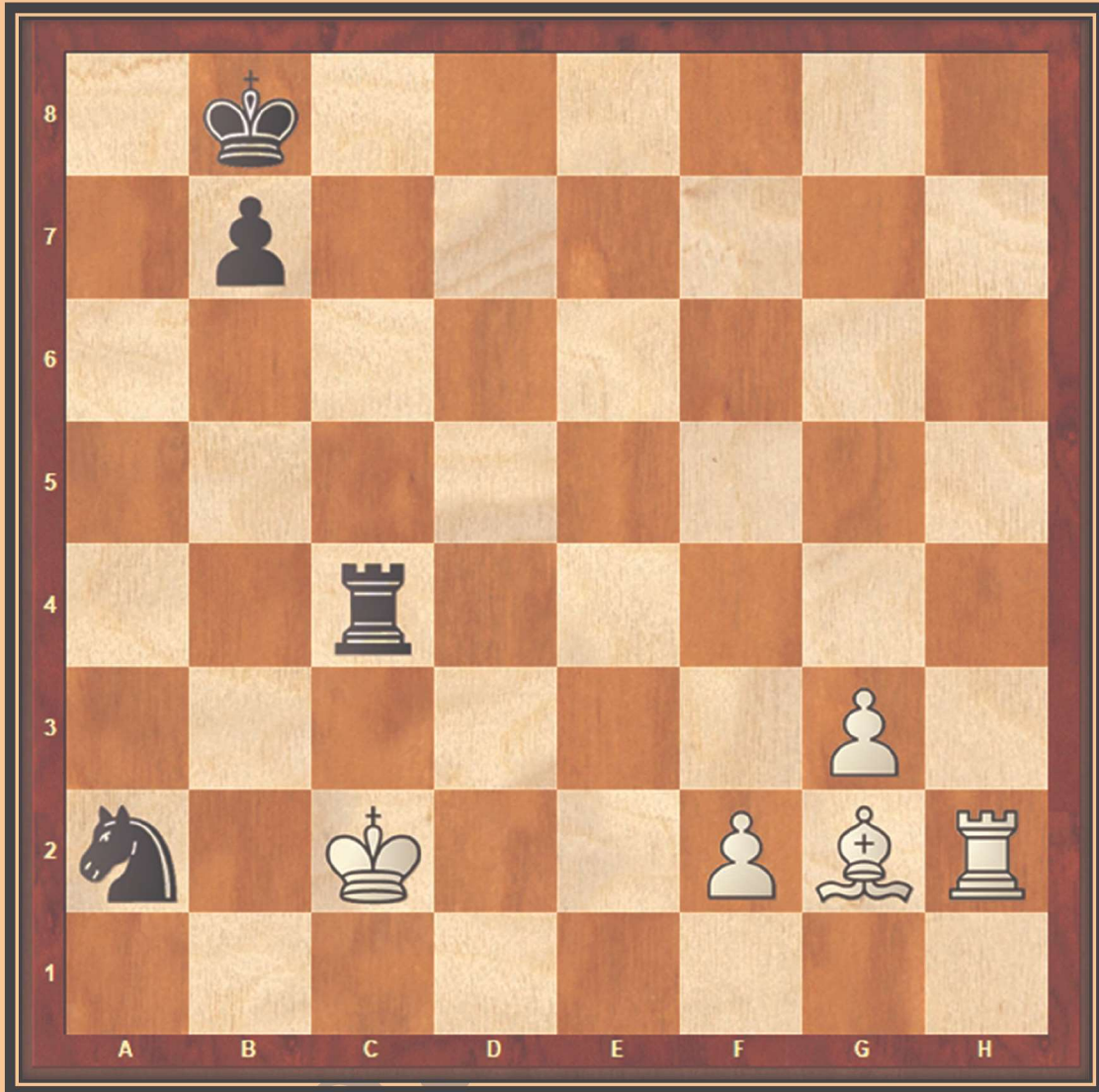
White to Play Create a Double Attack

White	Black
1) _____	



White to Play Create a Double Attack

White	Black
1) _____	



White to Play Create a Double Attack

White	Black
1) _____	