

Double Check

If two pieces simultaneously check the King then it is a Double check. Double check can be achieved only by a Discovered check. Double check cannot be defended by blocking or capturing, the only way is to move the king away from the check and if the King does not have any legal move its a checkmate.

In the above example if **White** Player Spots that Rook & Bishop are in diagonal and they can be used for double check as the Black King is there in the Bishop's diagonal.

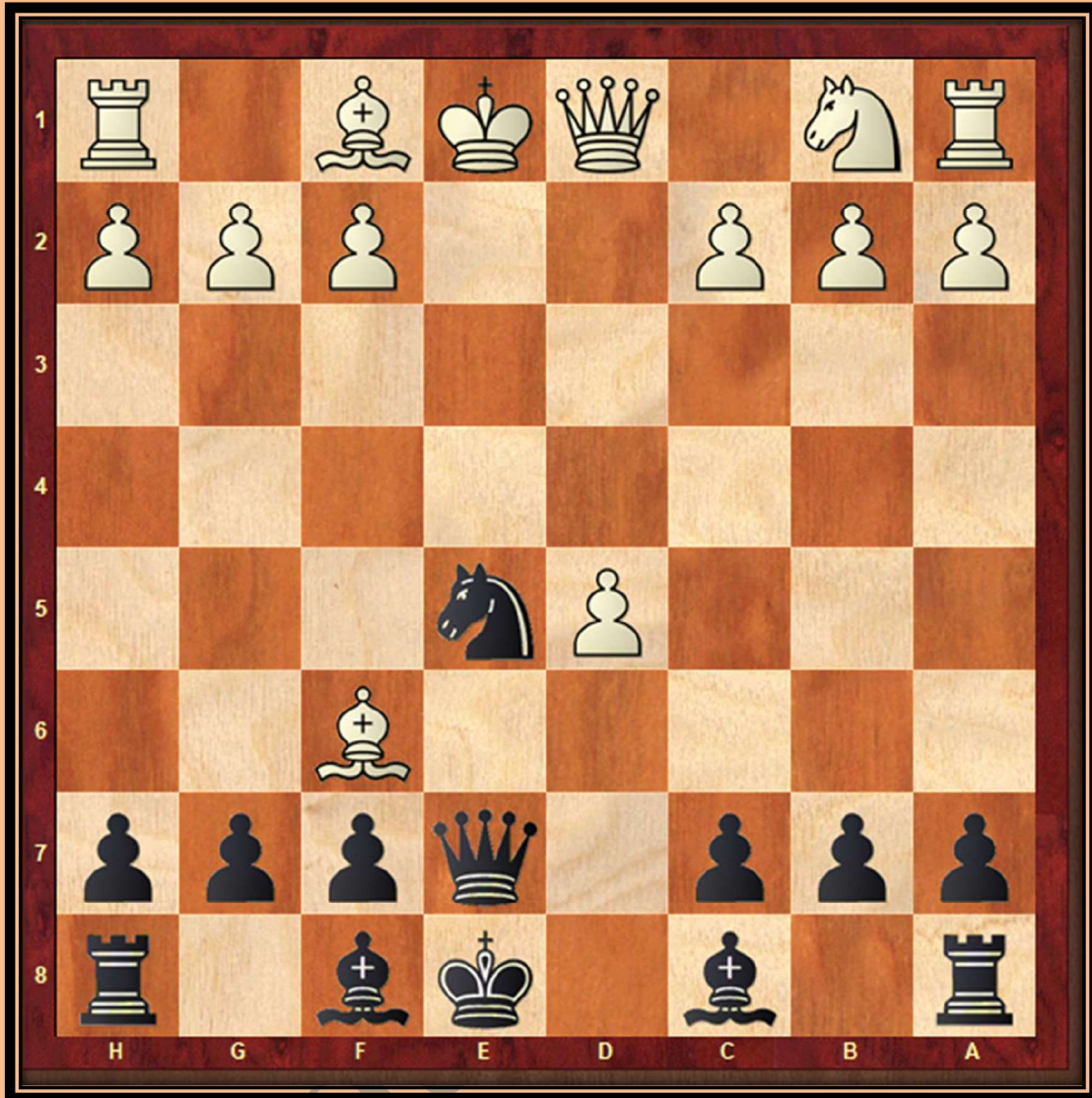
So **Rg8++** is the answer as the Bishop & Rook together deliver a Double Check to the Black King. **Kxg8 Rg1#**

Remember to put “++” in the end of each move.

Solve the following puzzles

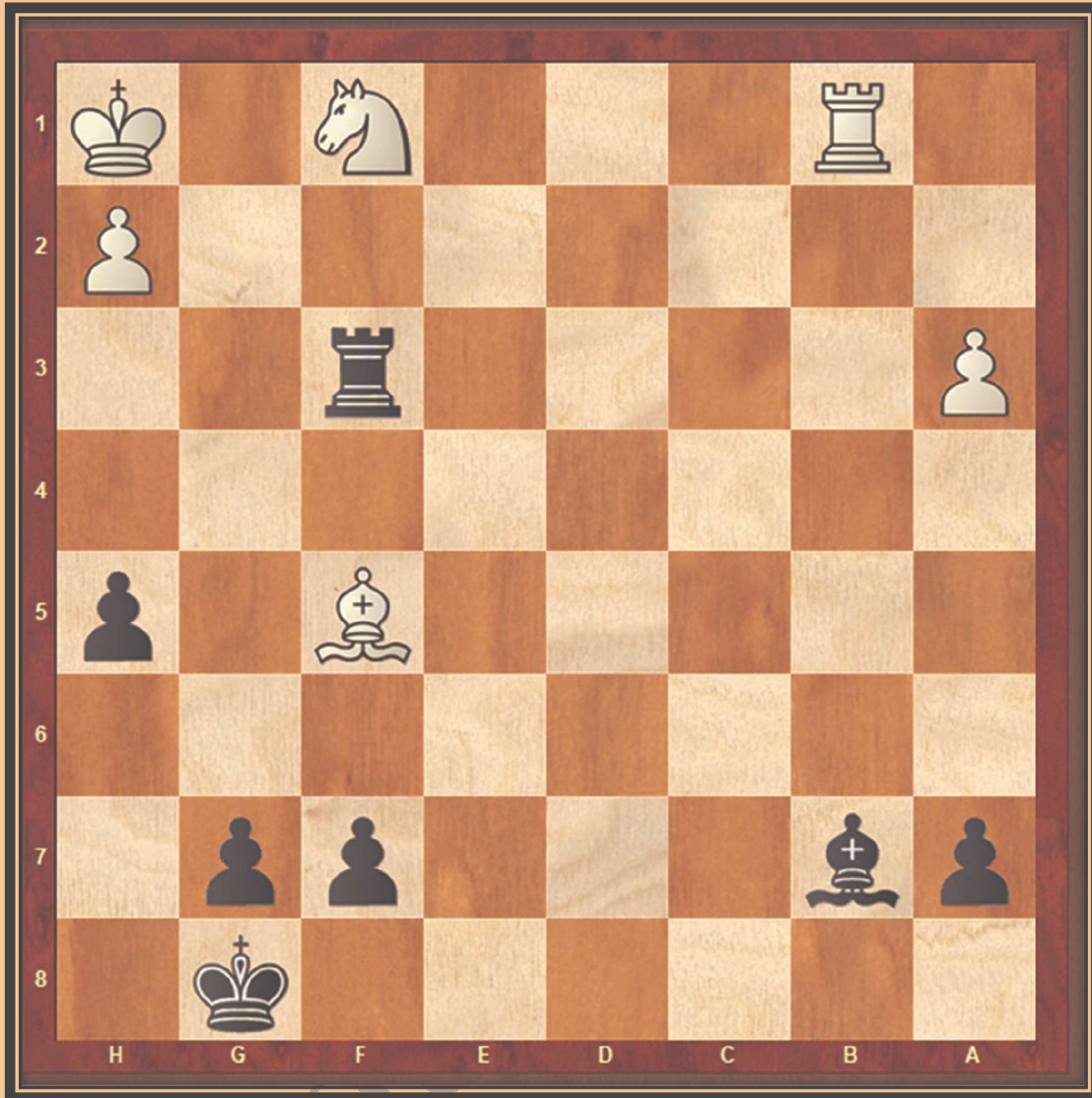
1. Setup the position on your board
2. Spot the placement of your pieces & the enemy's king
3. Find out a way to Double Check the King
4. Try to write the notations in the given box
5. There you go! All the best.

Vedant Joshi



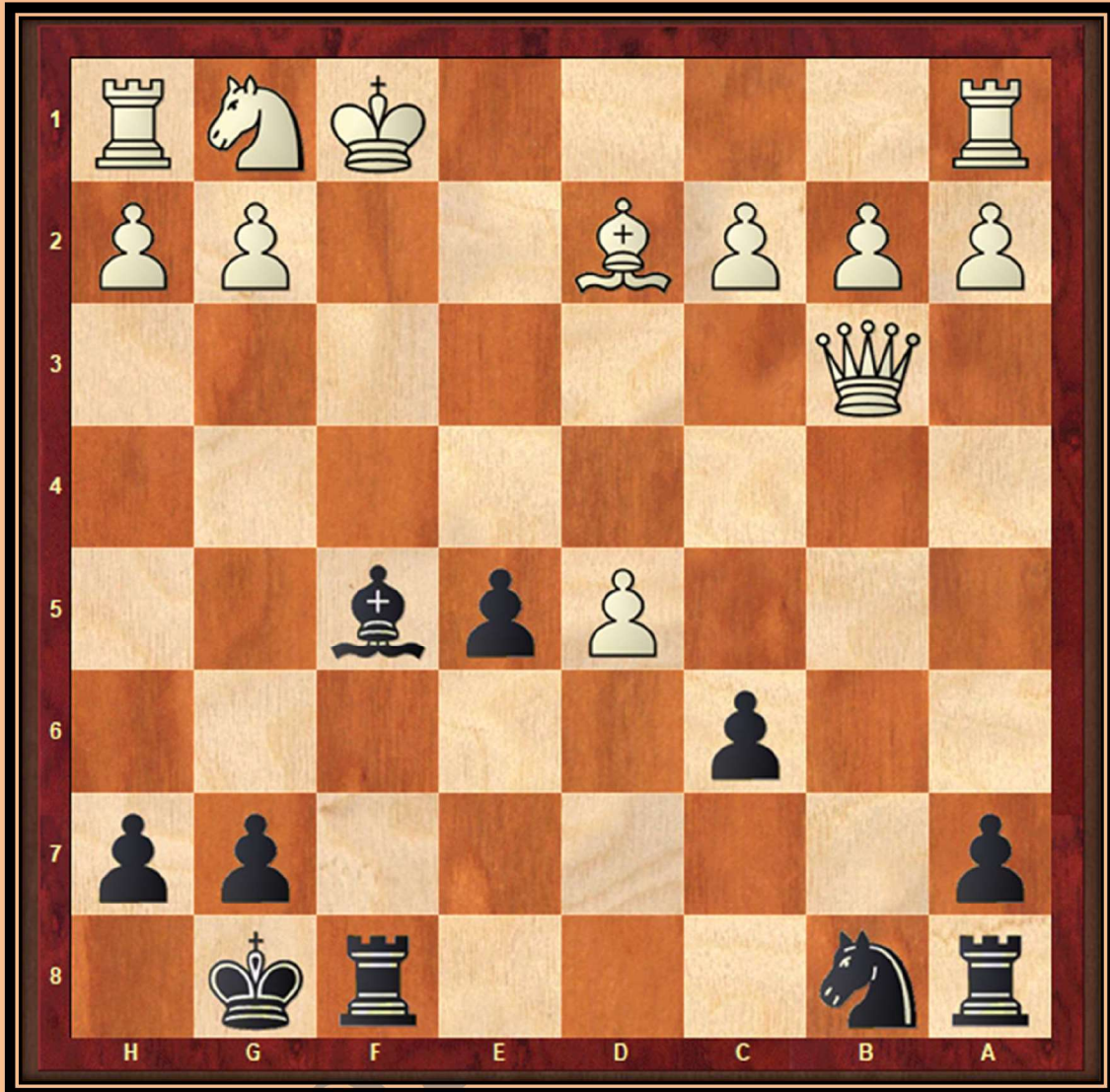
Black to Play Create a Double Check

White	Black
1) _____	



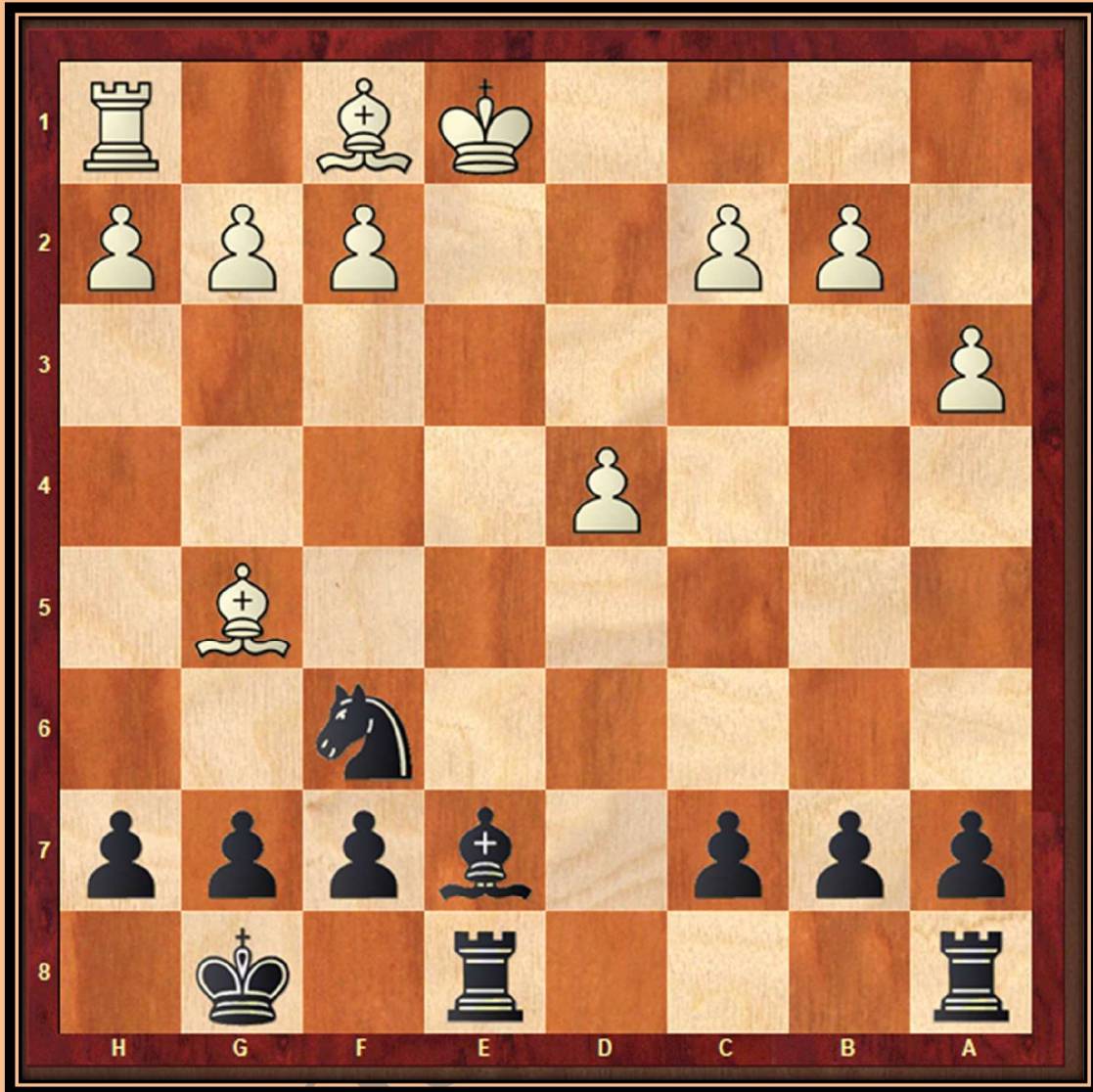
Black to Play Create a Double Check

White	Black
1) _____	



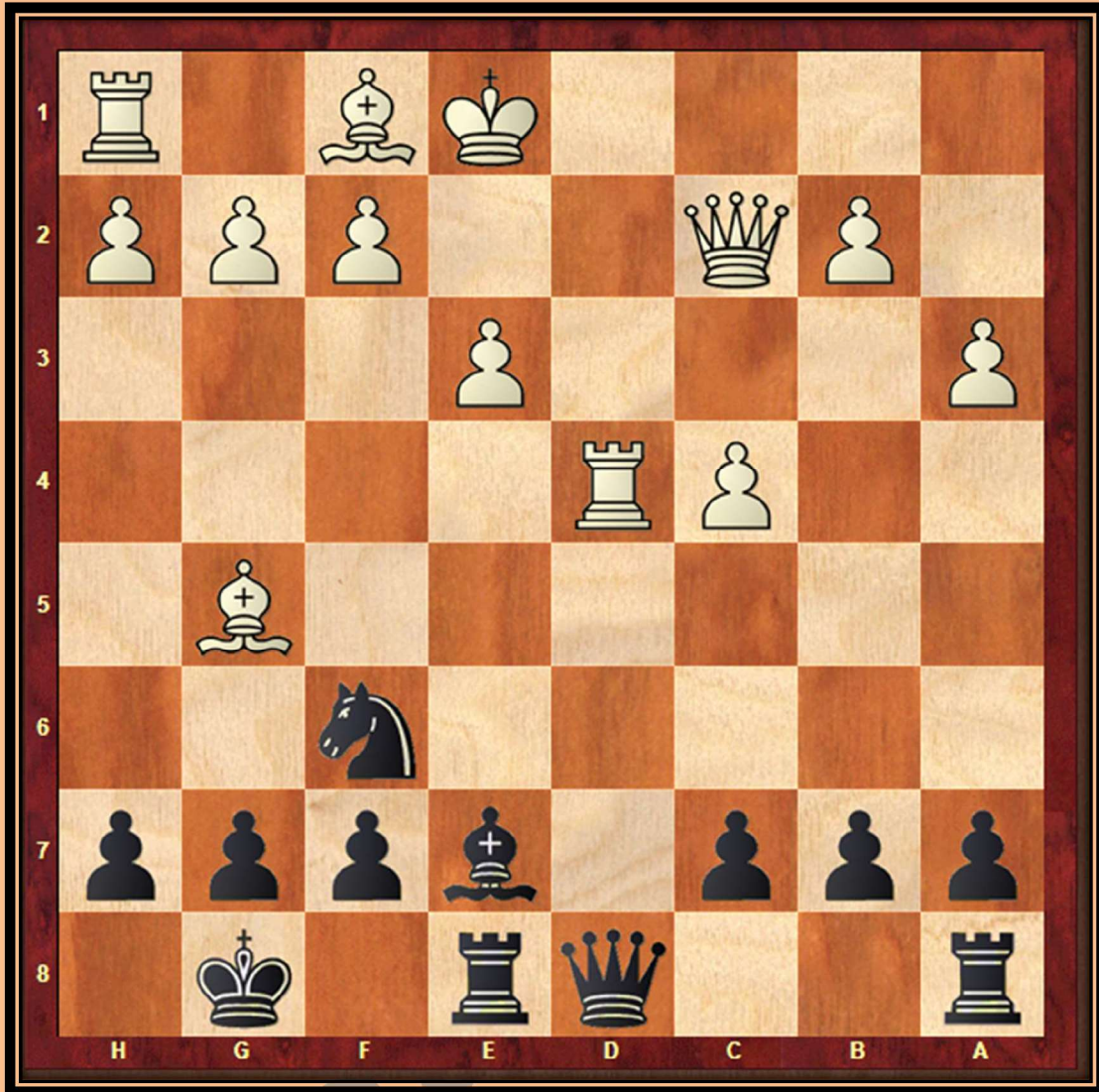
Black to Play Create a Double Check

White	Black
1) _____	



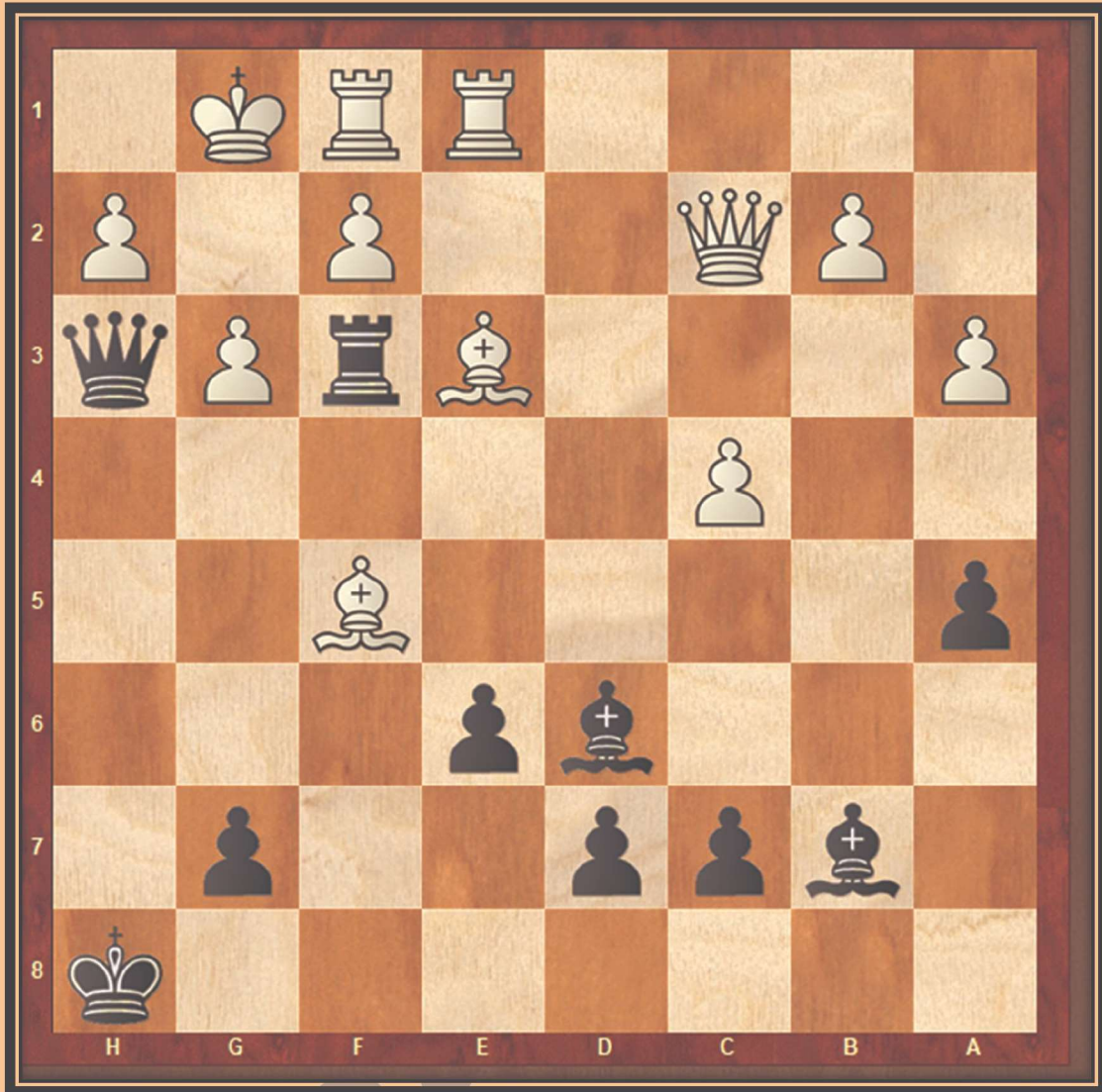
Black to Play Create a Double Check

White	Black
1) _____	



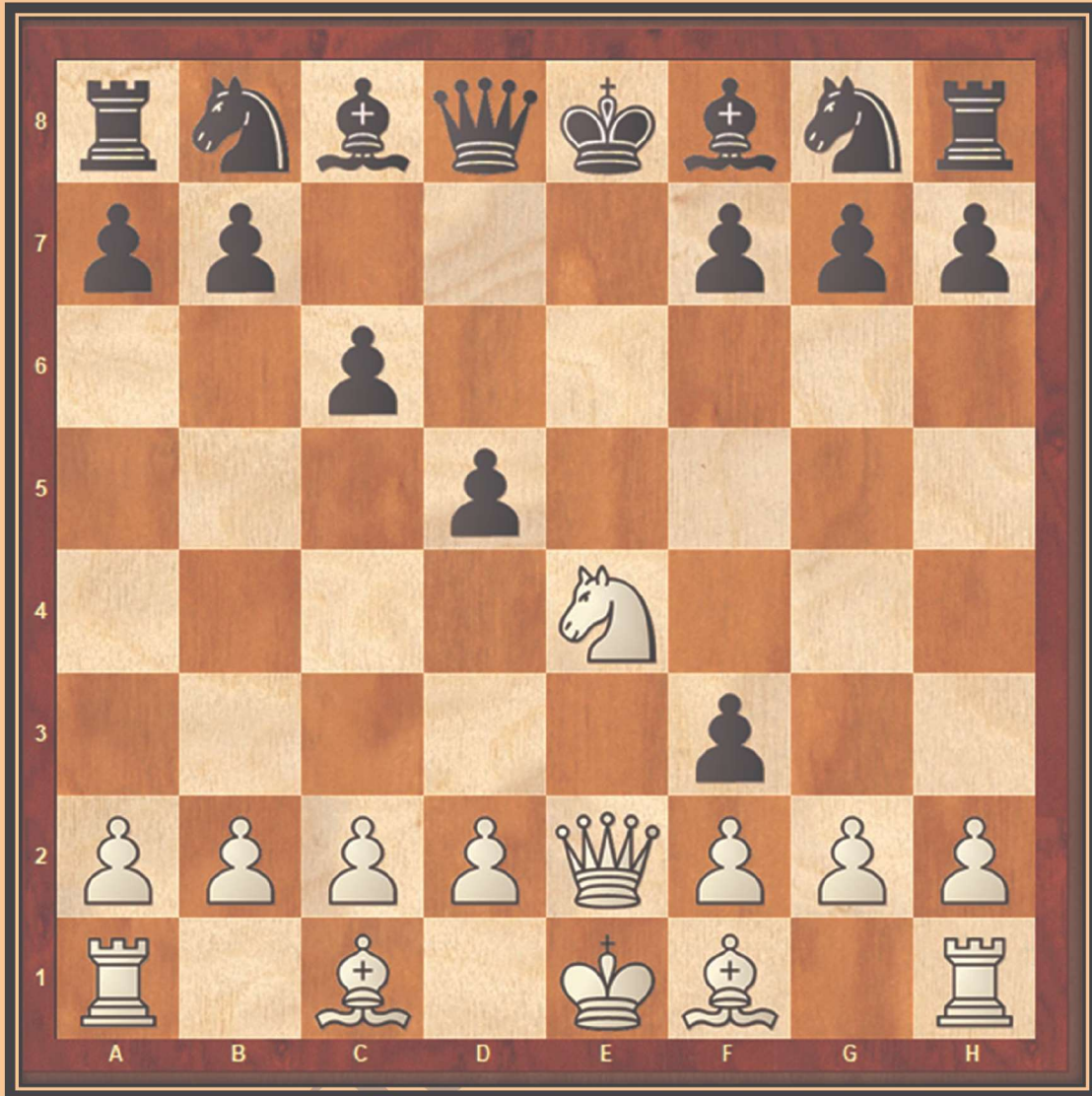
Black to Play Create a Double Check

White	Black
1) _____	



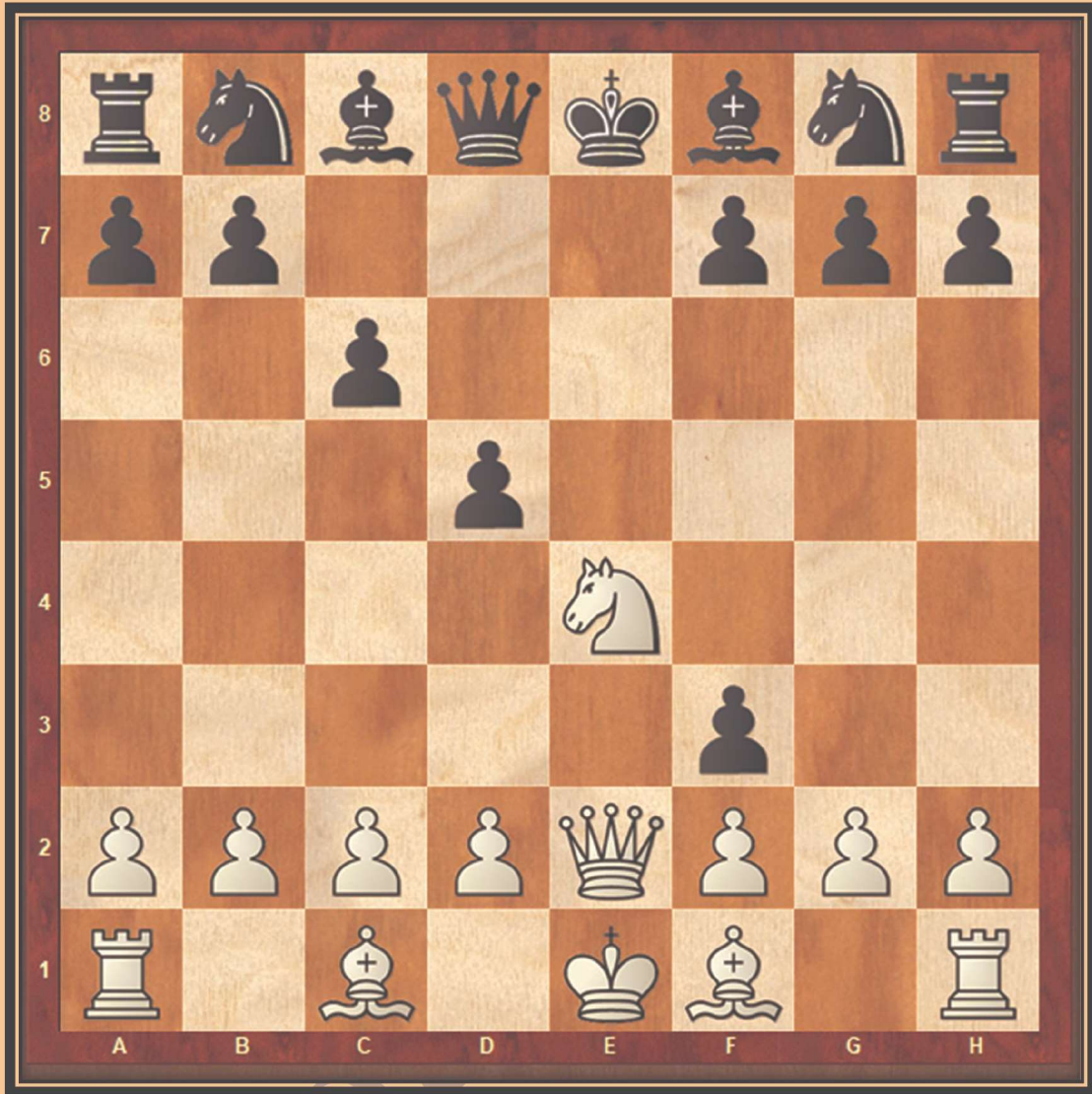
Black to Play Create a Double Check

White	Black
1) _____	



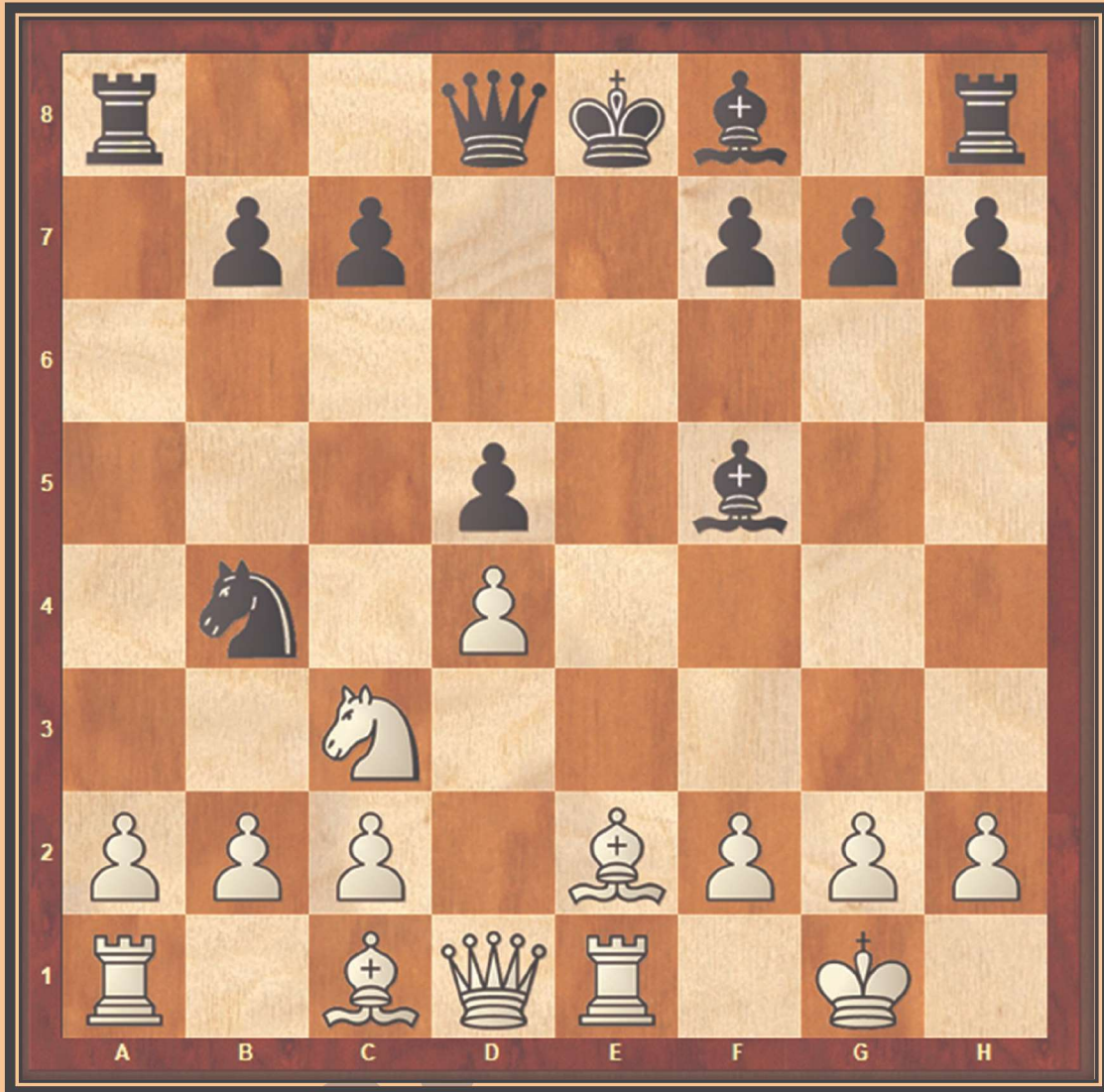
White to Play Create a Double Check

White	Black
1) _____	



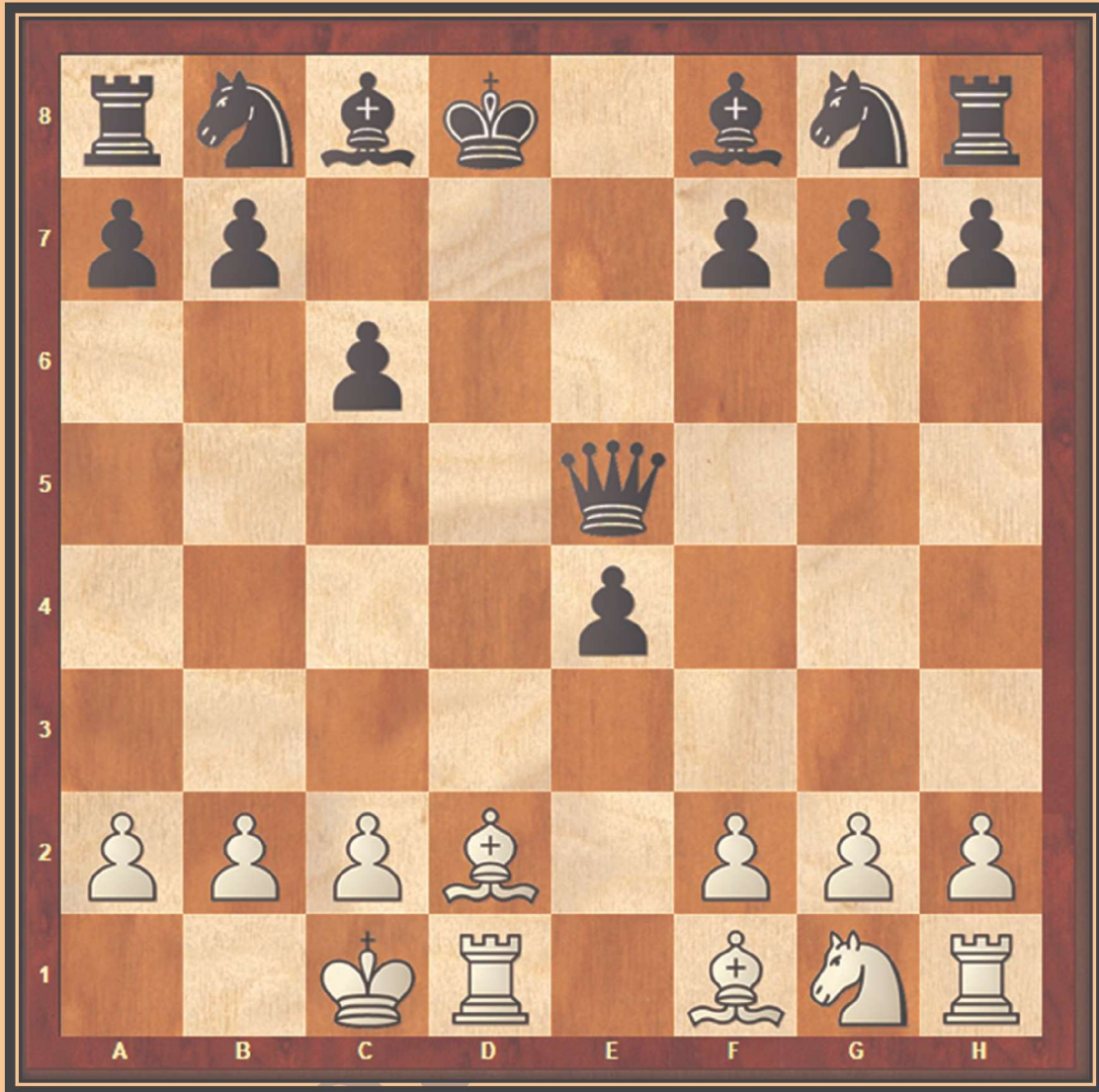
White to Play Create a Double Check

White	Black
1) _____	



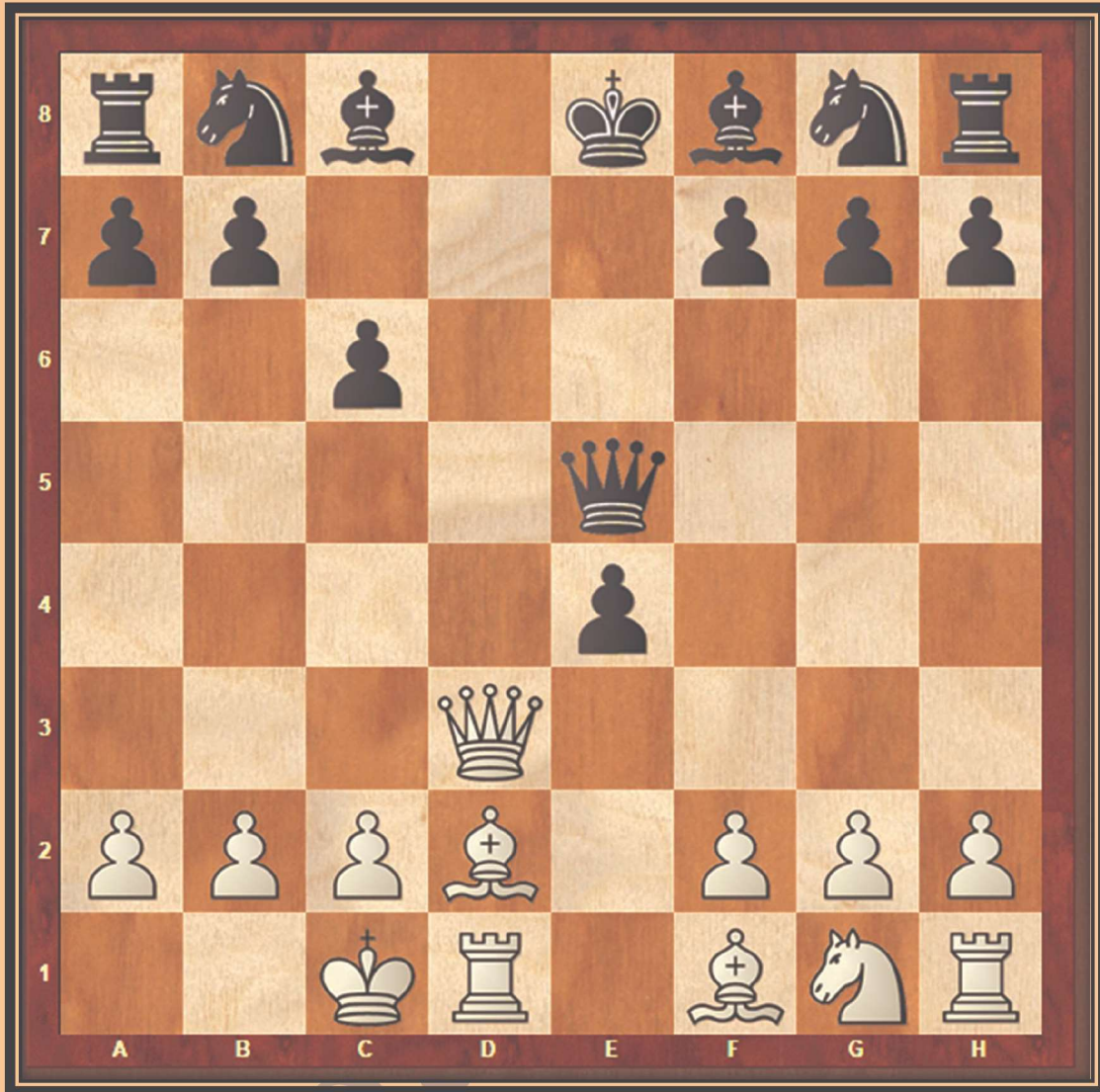
White to Play Create a Double Check

White	Black
1) _____	



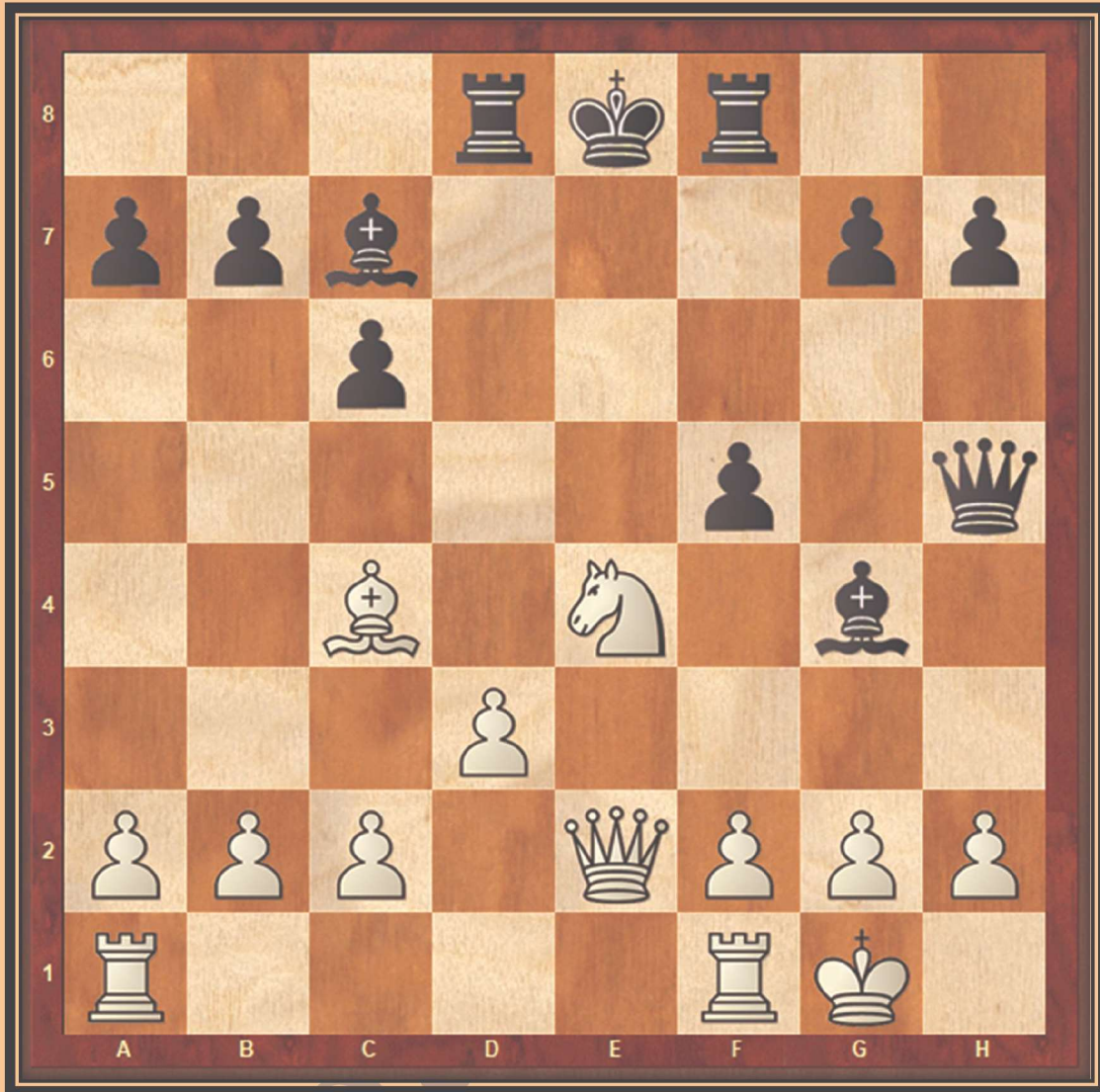
White to Play Create a Double Check

White	Black
1) _____	



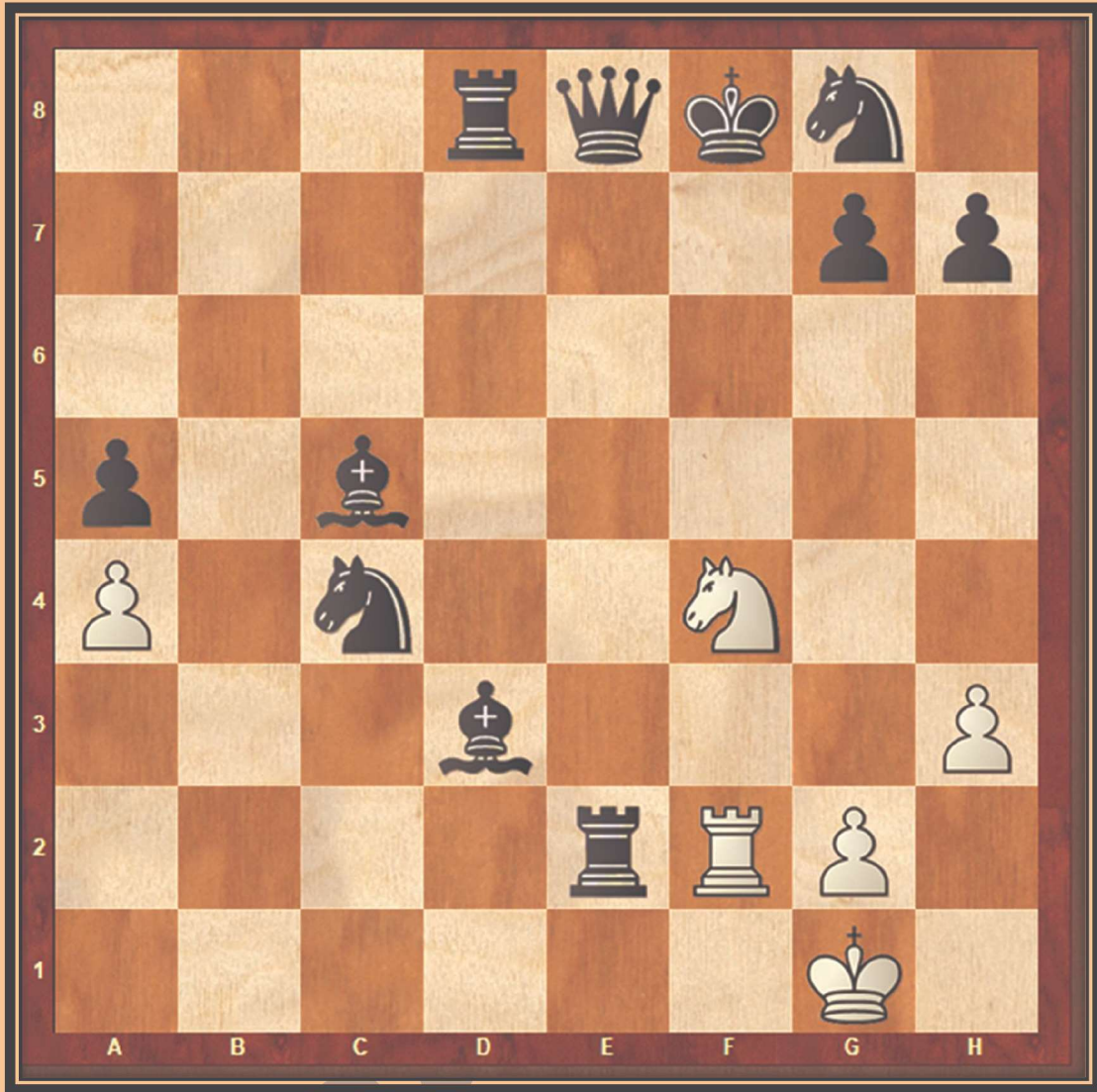
White to Play Create a Double Check

White	Black
1) _____	



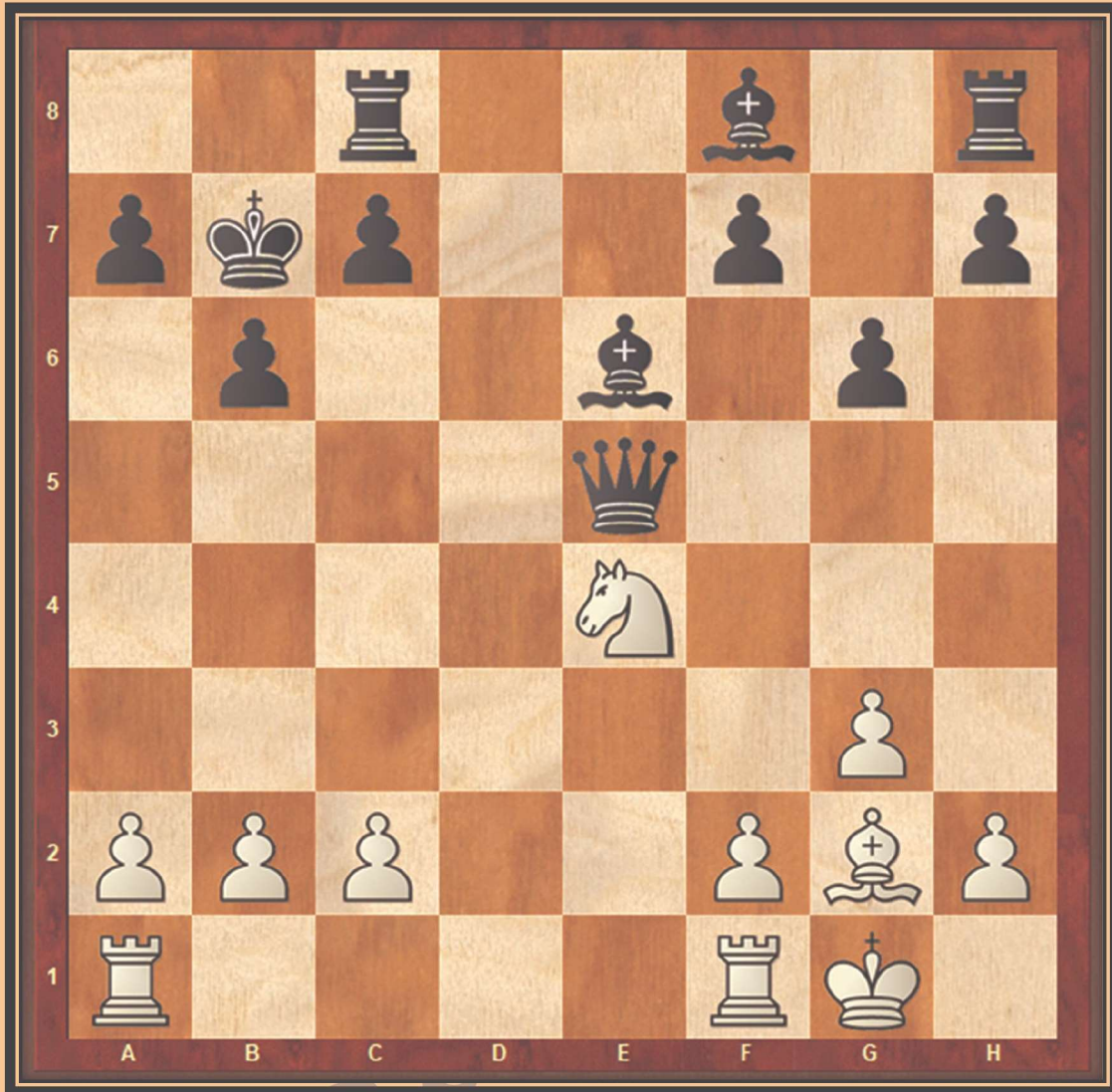
White to Play Create a Double Check

White	Black
1) _____	



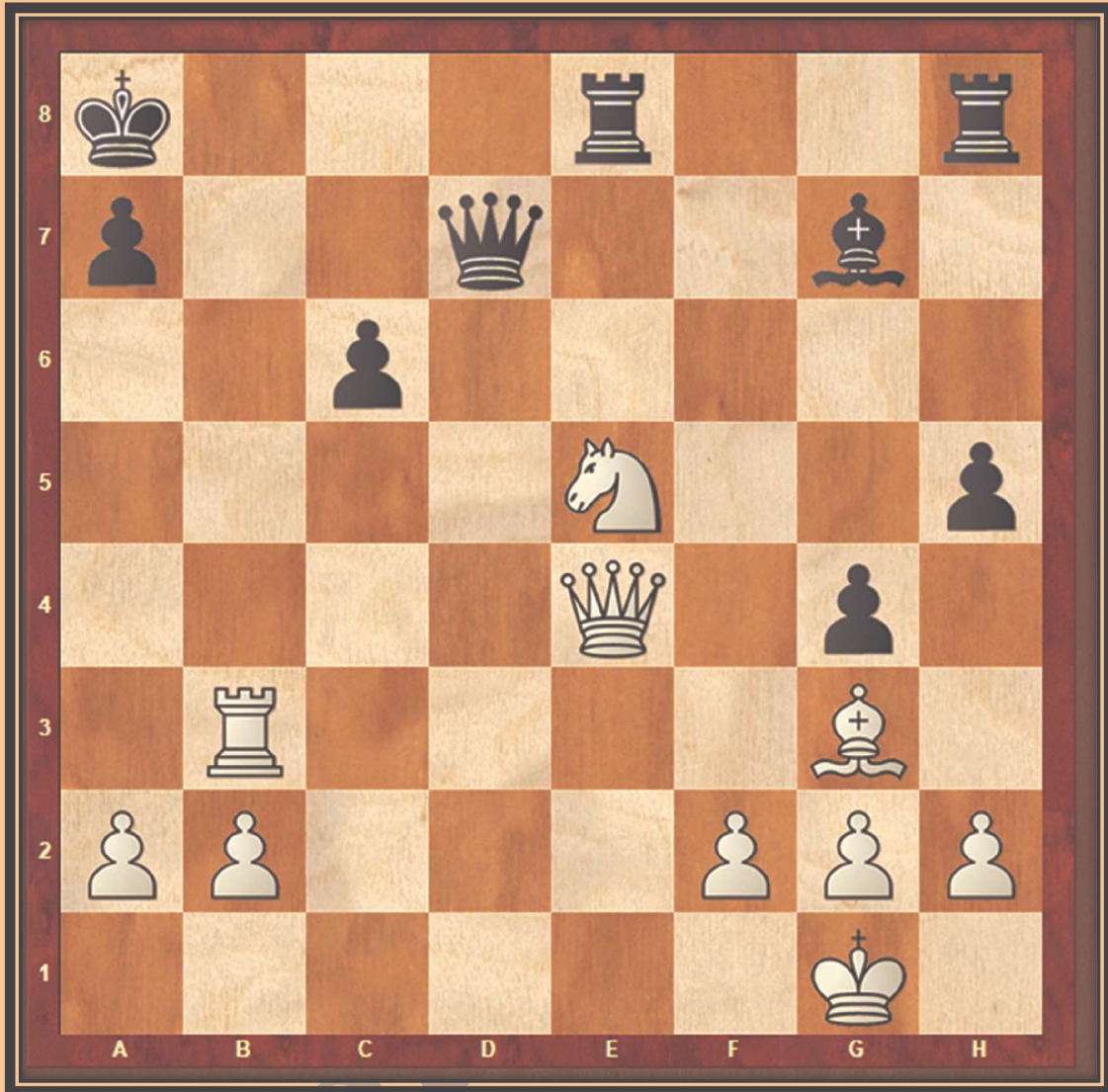
White to Play Create a Double Check

White	Black
1) _____	



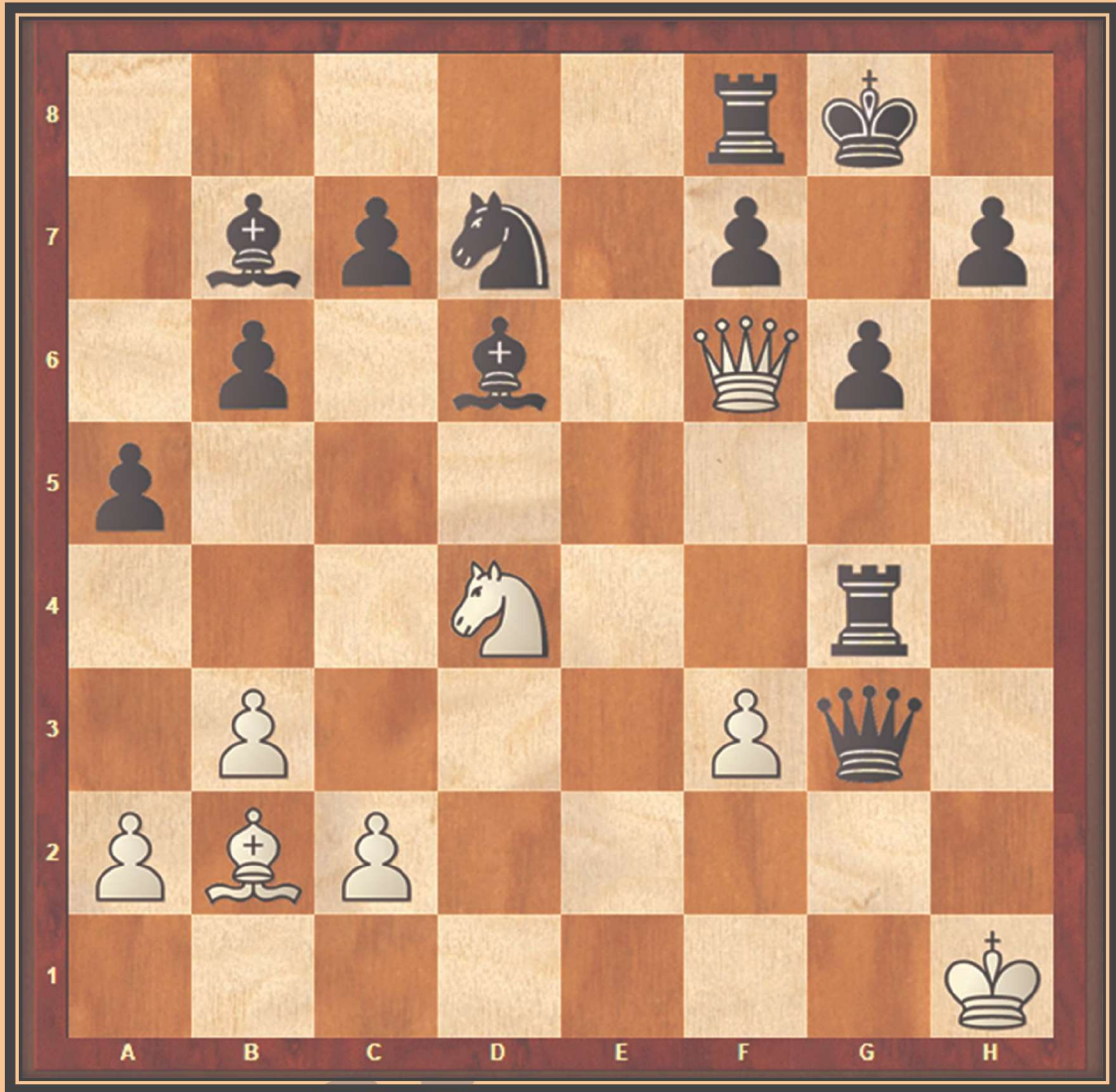
White to Play Create a Double Check

White	Black
1) _____	



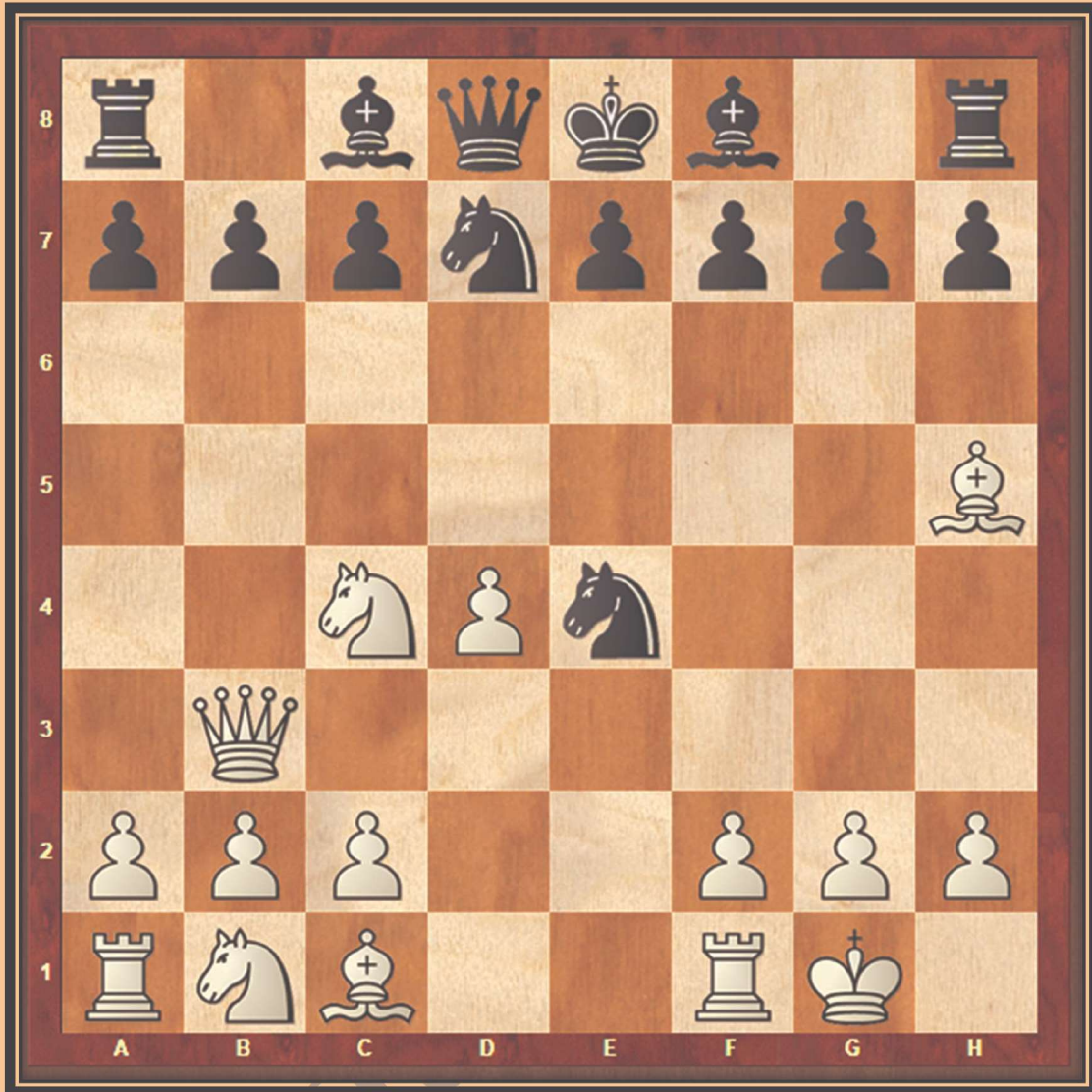
White to Play Create a Double Check

White	Black
1) _____	



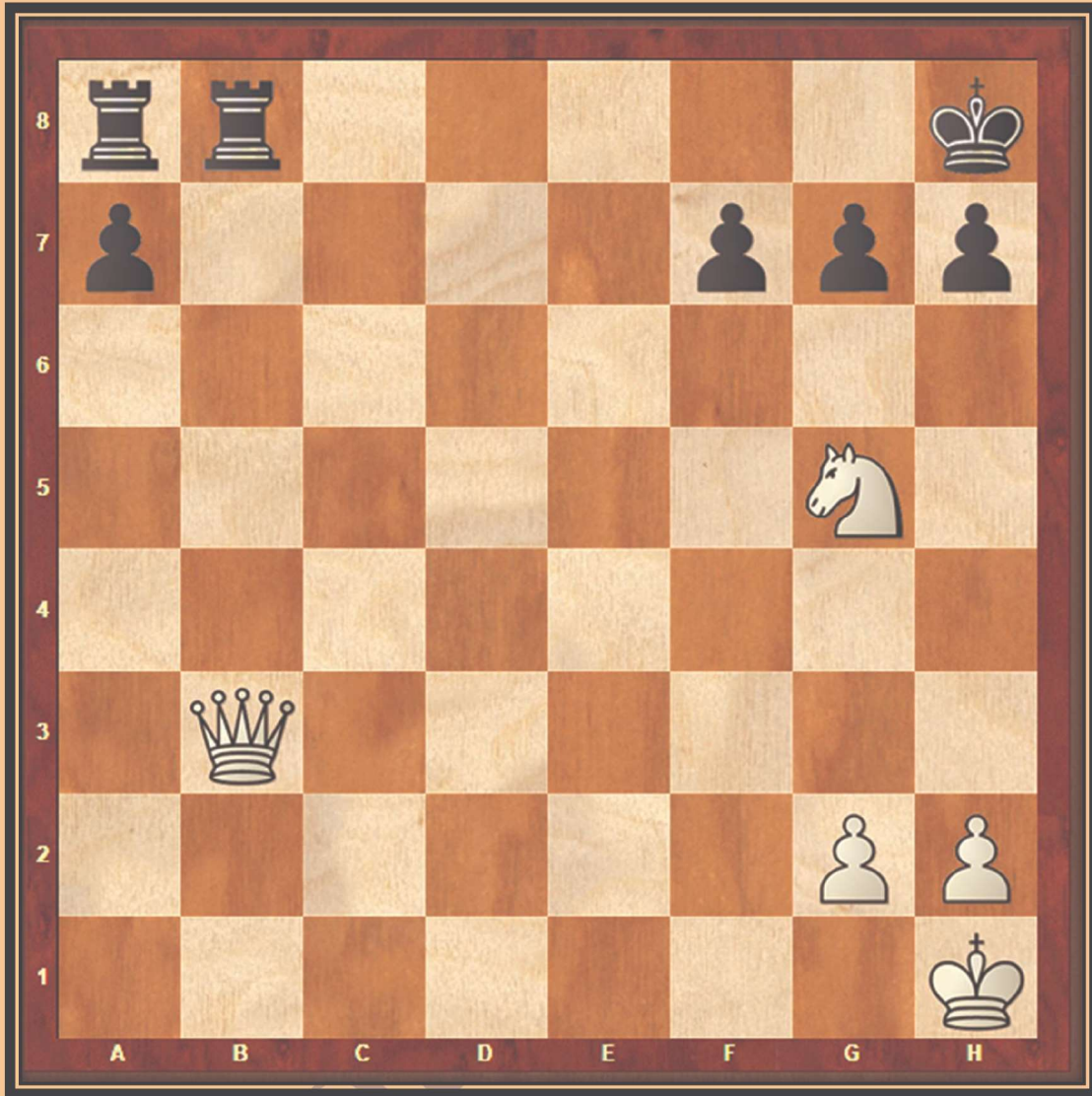
White to Play Create a Double Check

White	Black
1) _____	



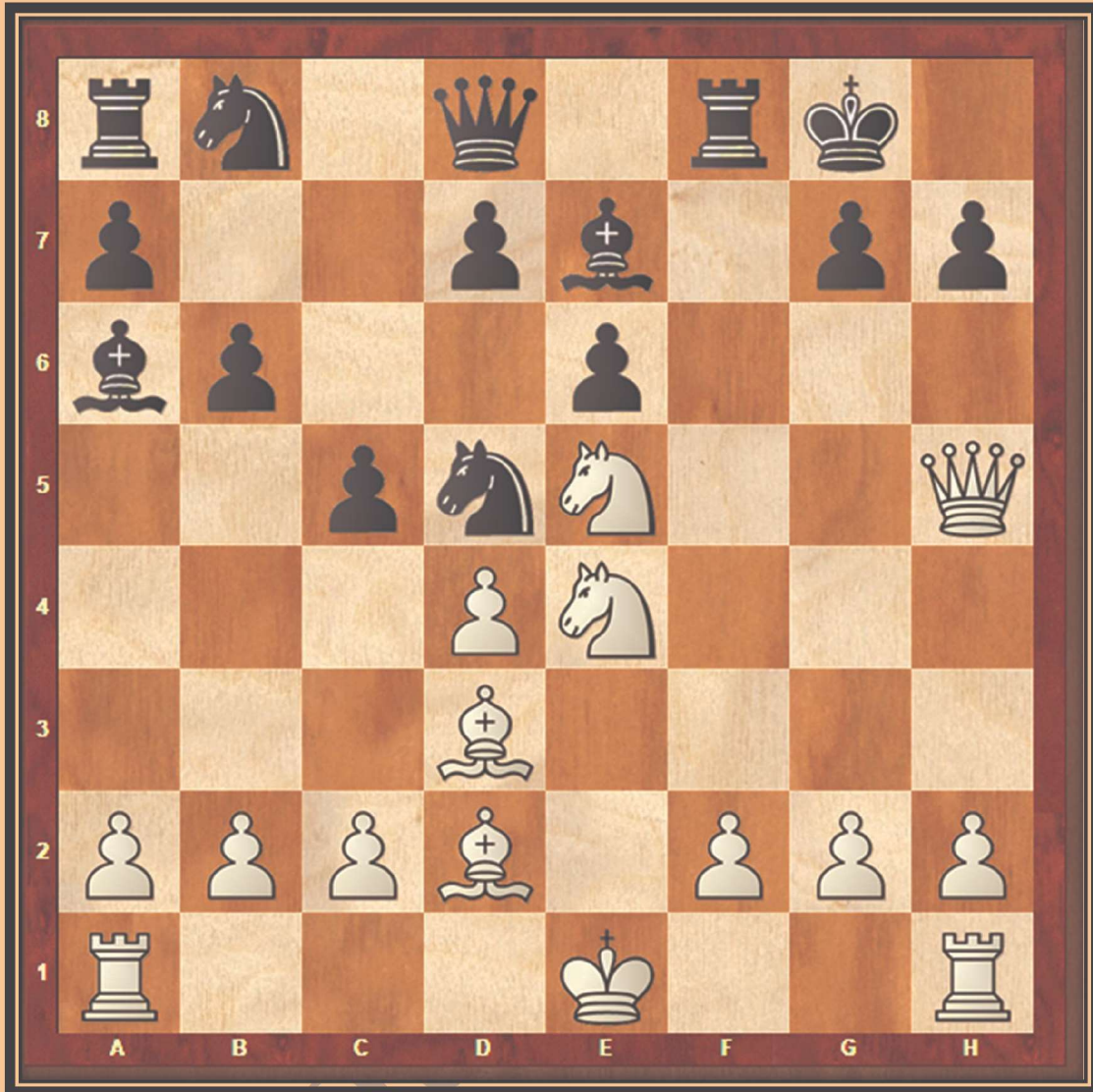
White to Play Create a Double Check

White	Black
1) _____	



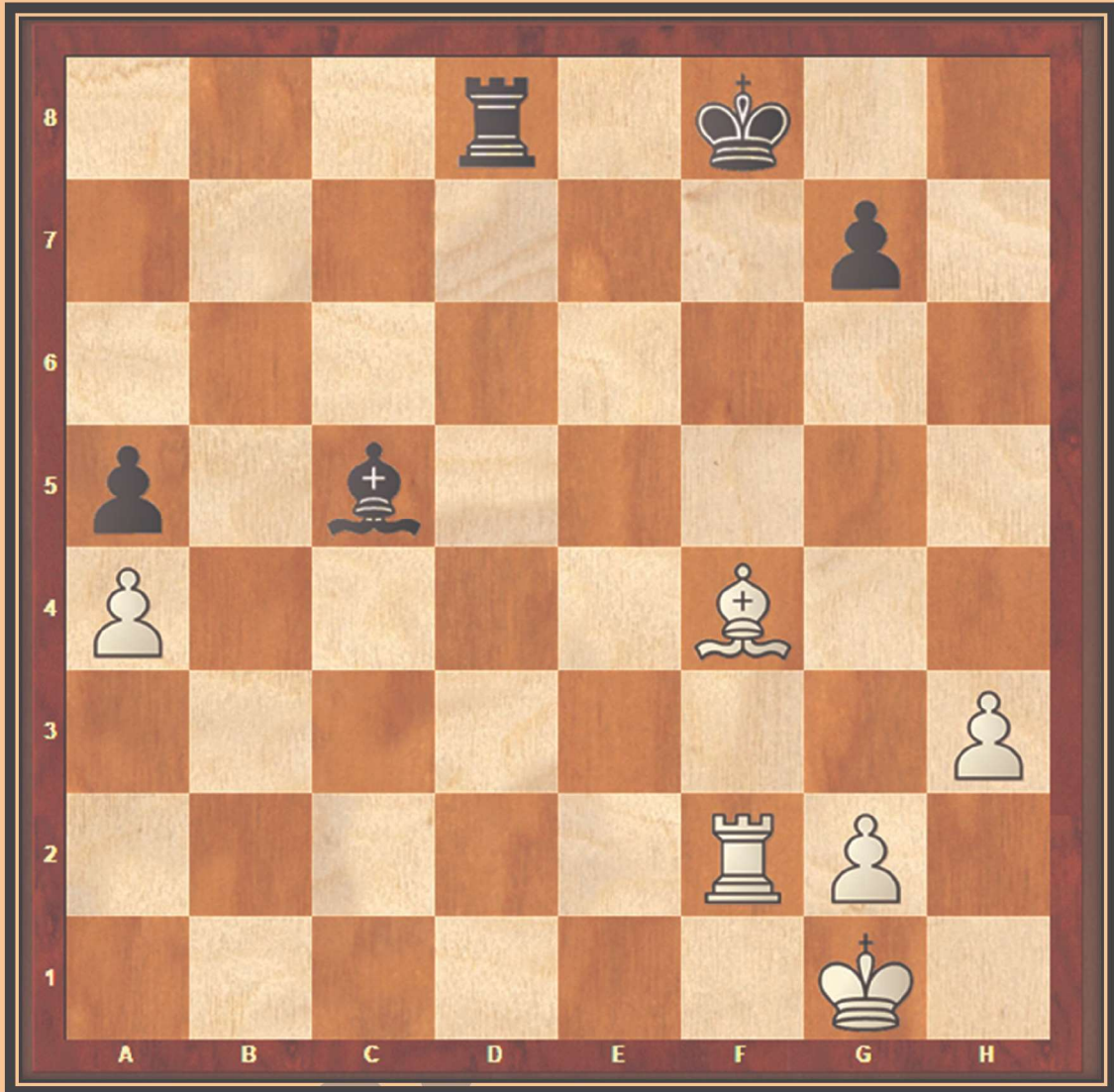
White to Play Create a Double Check

White	Black
1) _____	



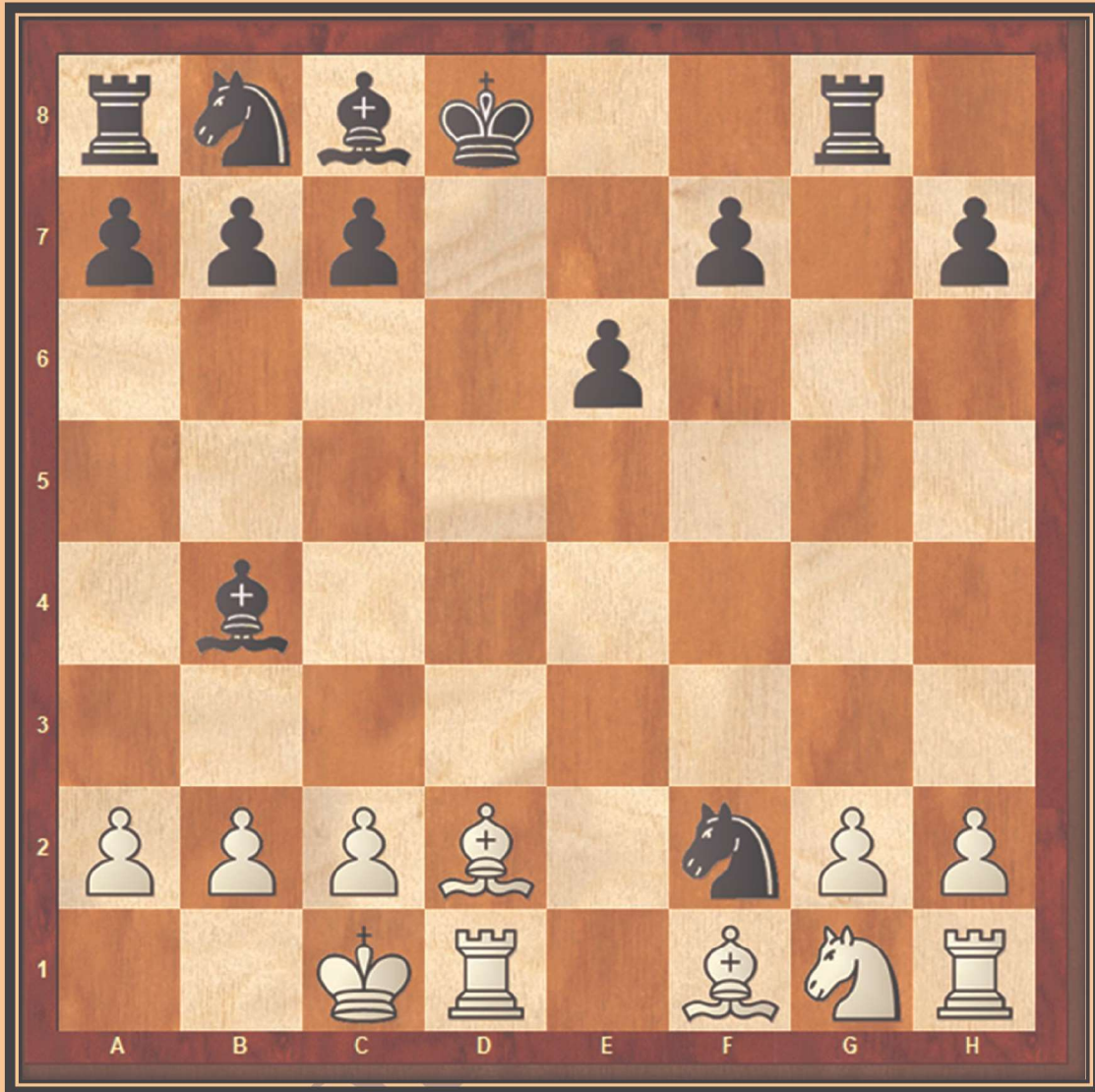
White to Play Create a Double Check

White	Black
1) _____	



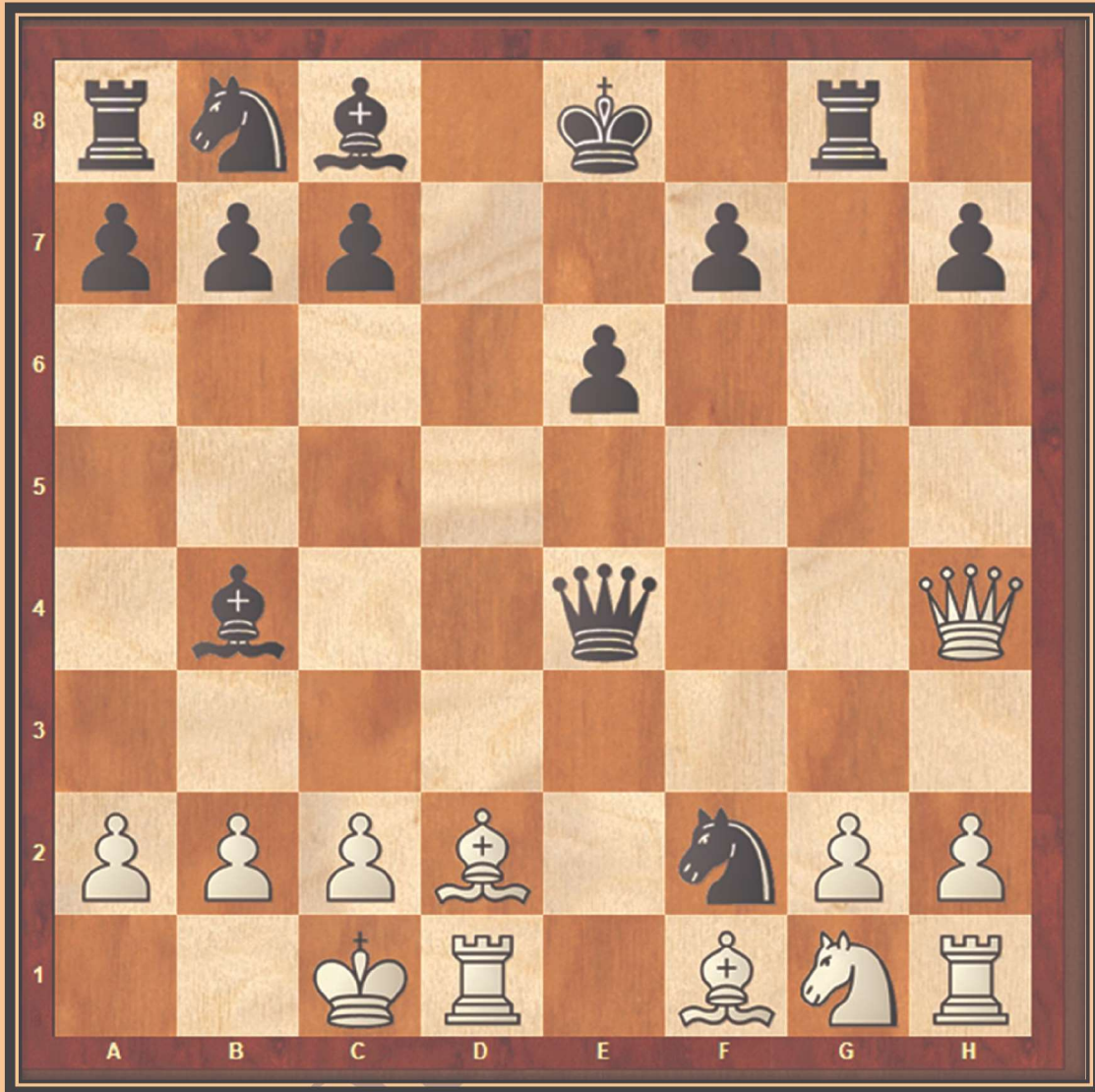
White to Play Create a Double Check

White	Black
1) _____	



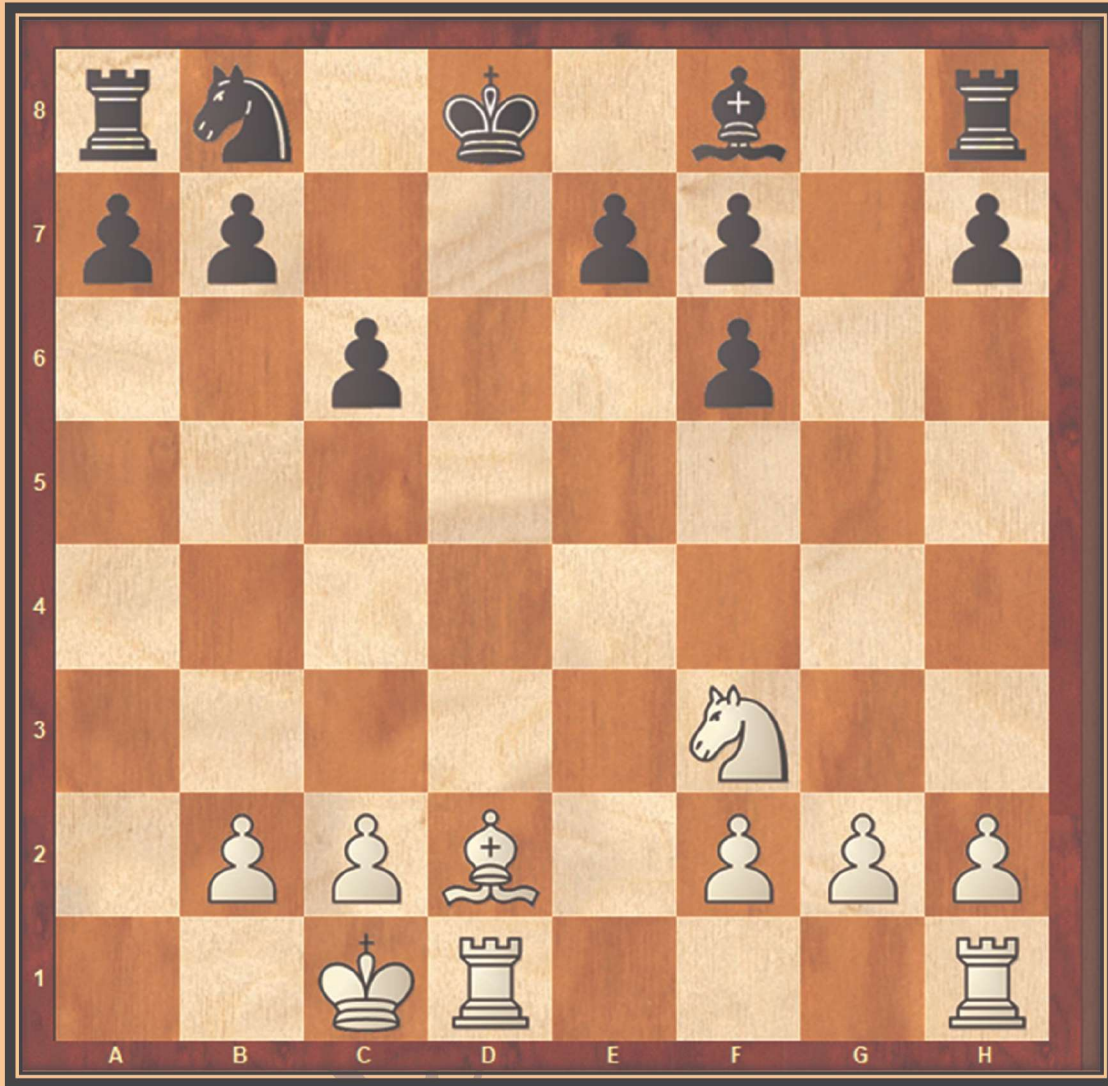
White to Play Create a Double Check

White	Black
1) _____	



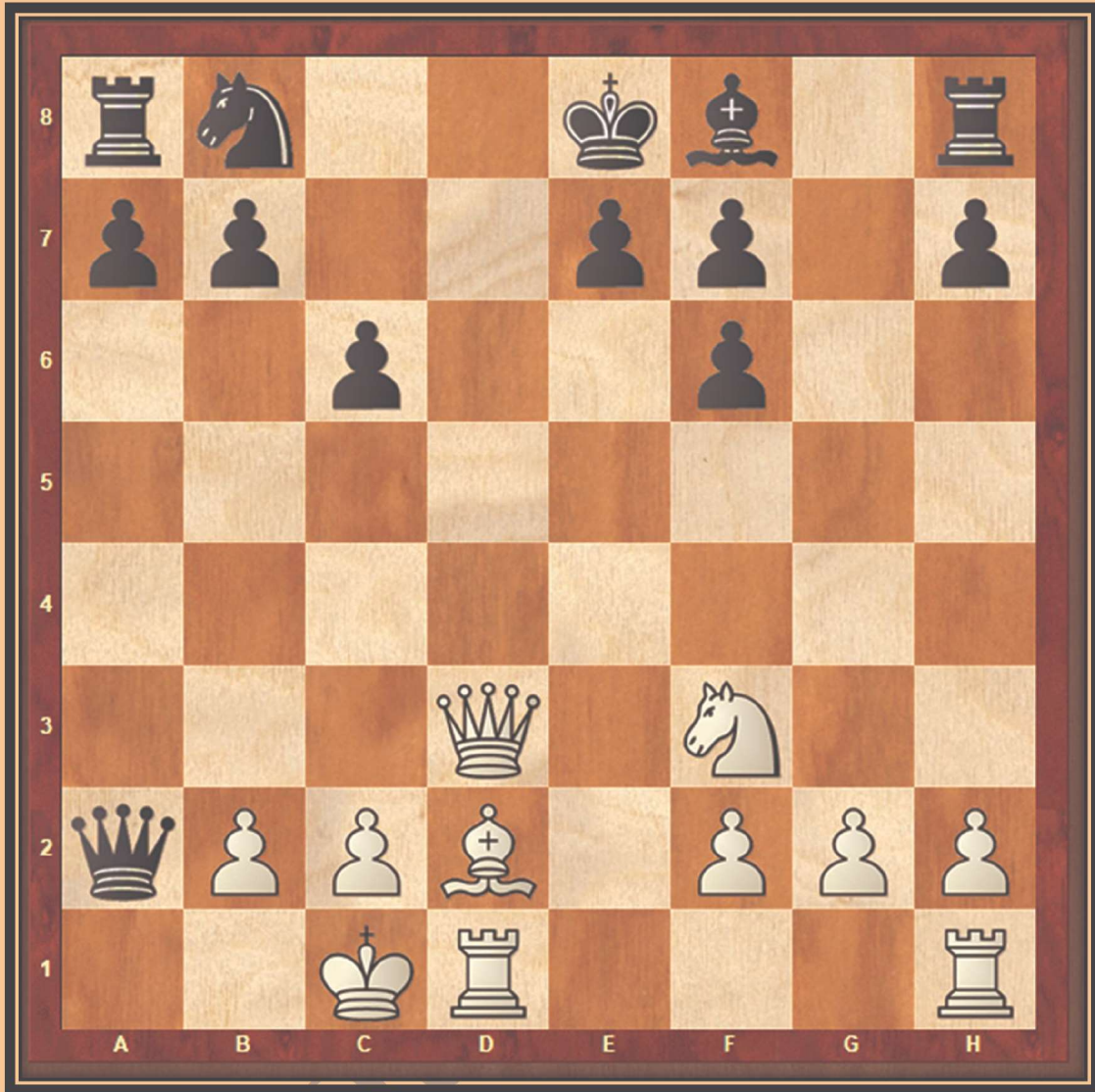
White to Play Create a Double Check

White	Black
1) _____	



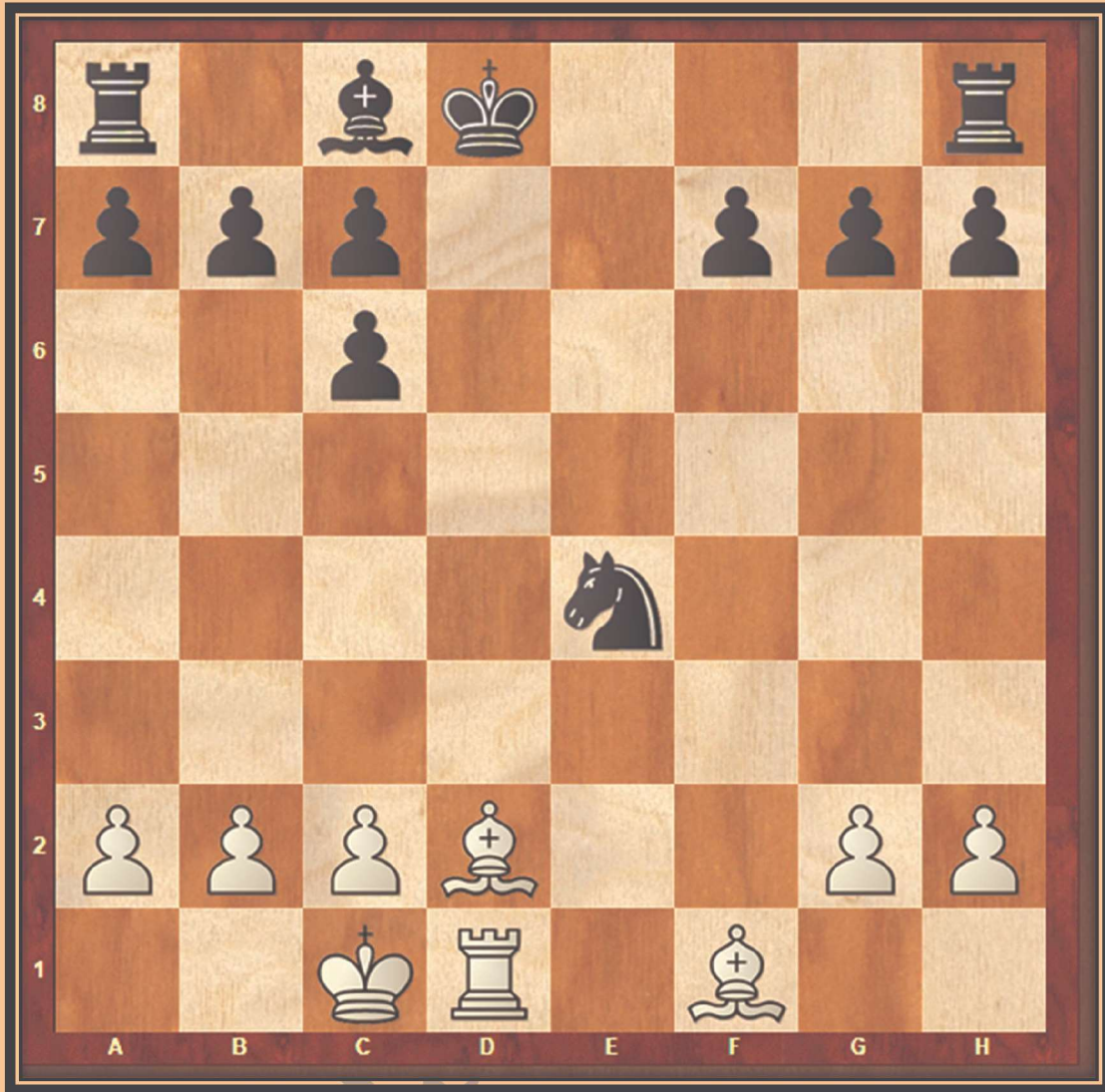
White to Play Create a Double Check

White	Black
1) _____	



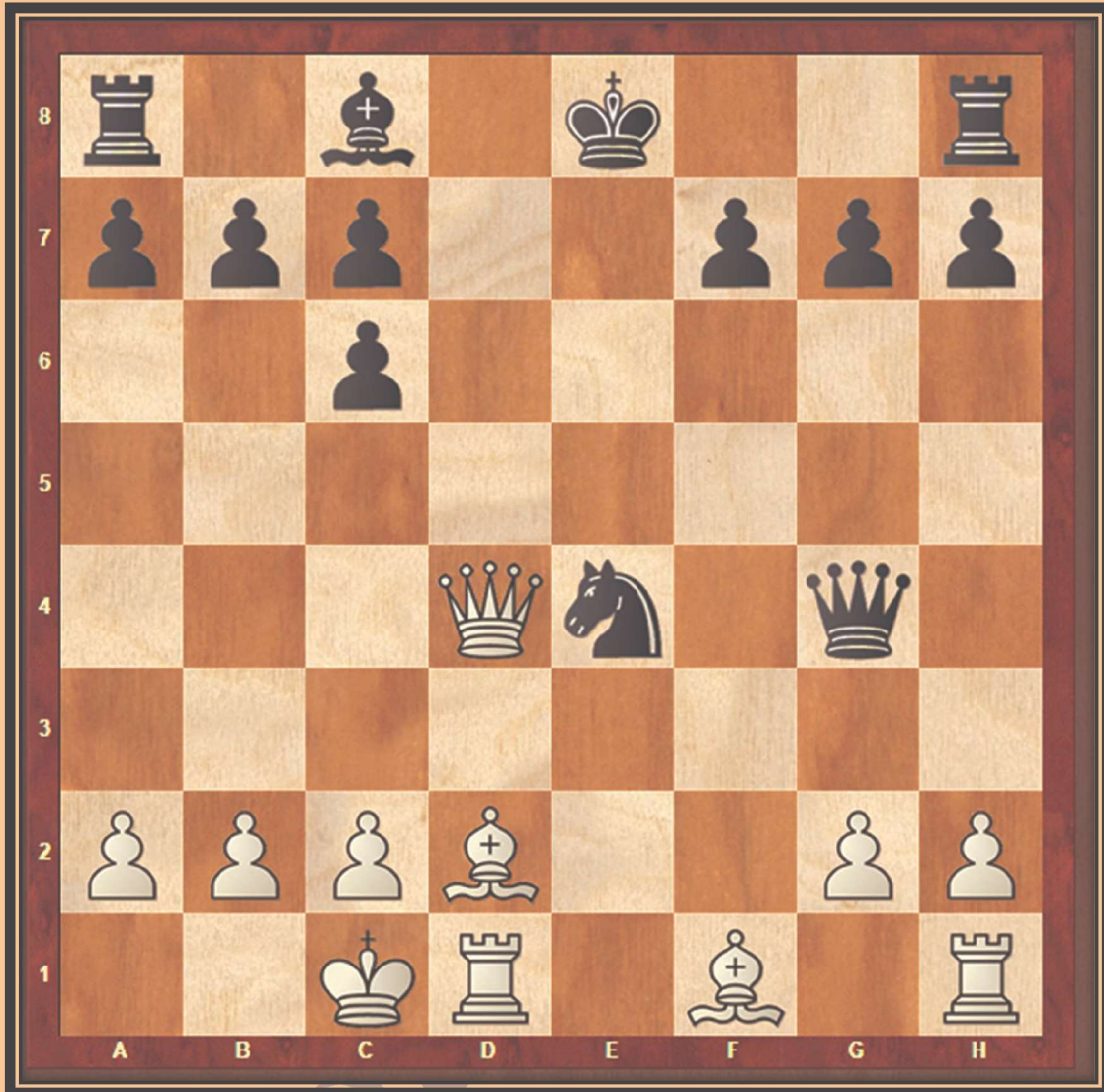
White to Play Create a Double Check

White	Black
1) _____	



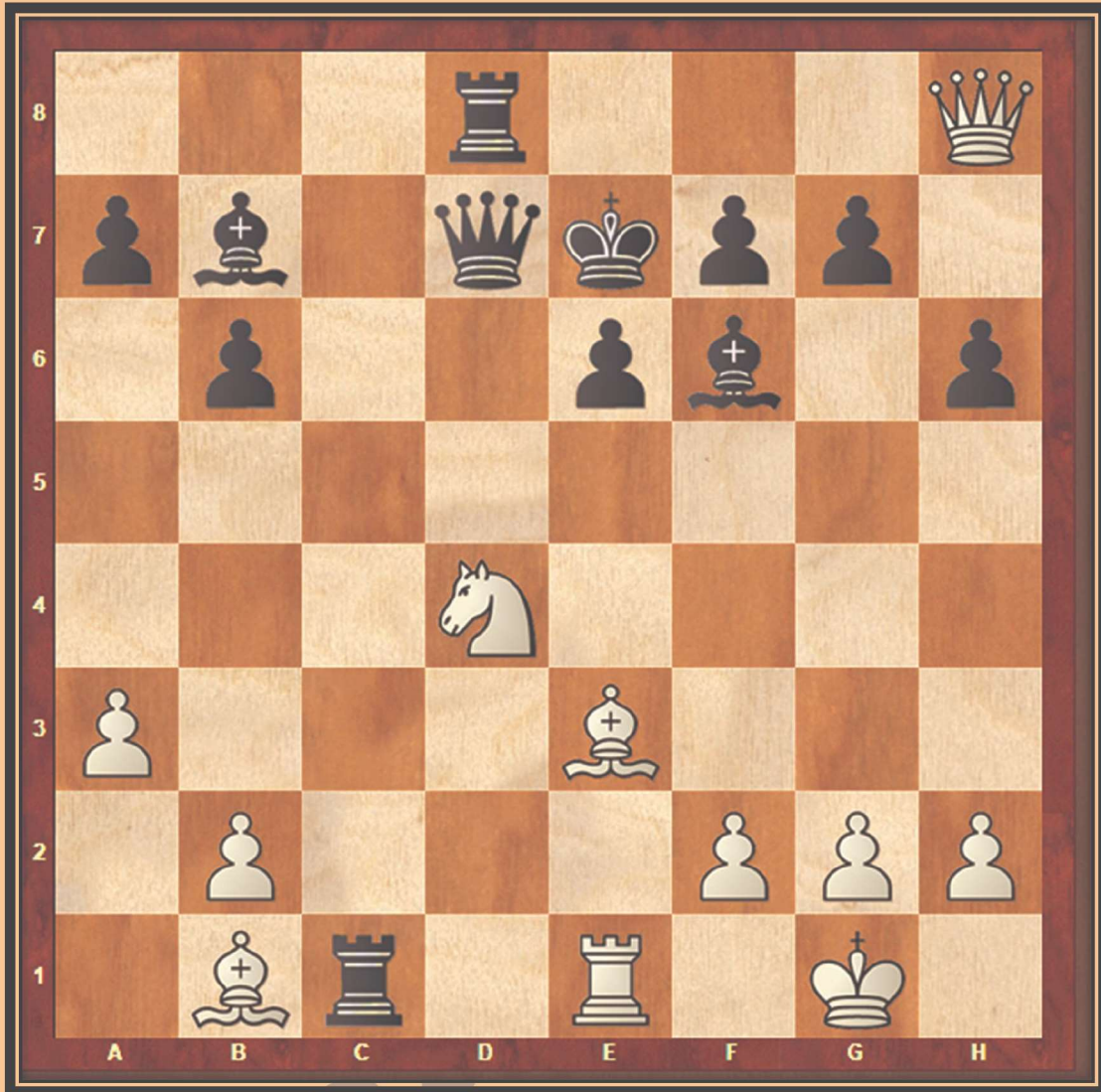
White to Play Create a Double Check

White	Black
1) _____	



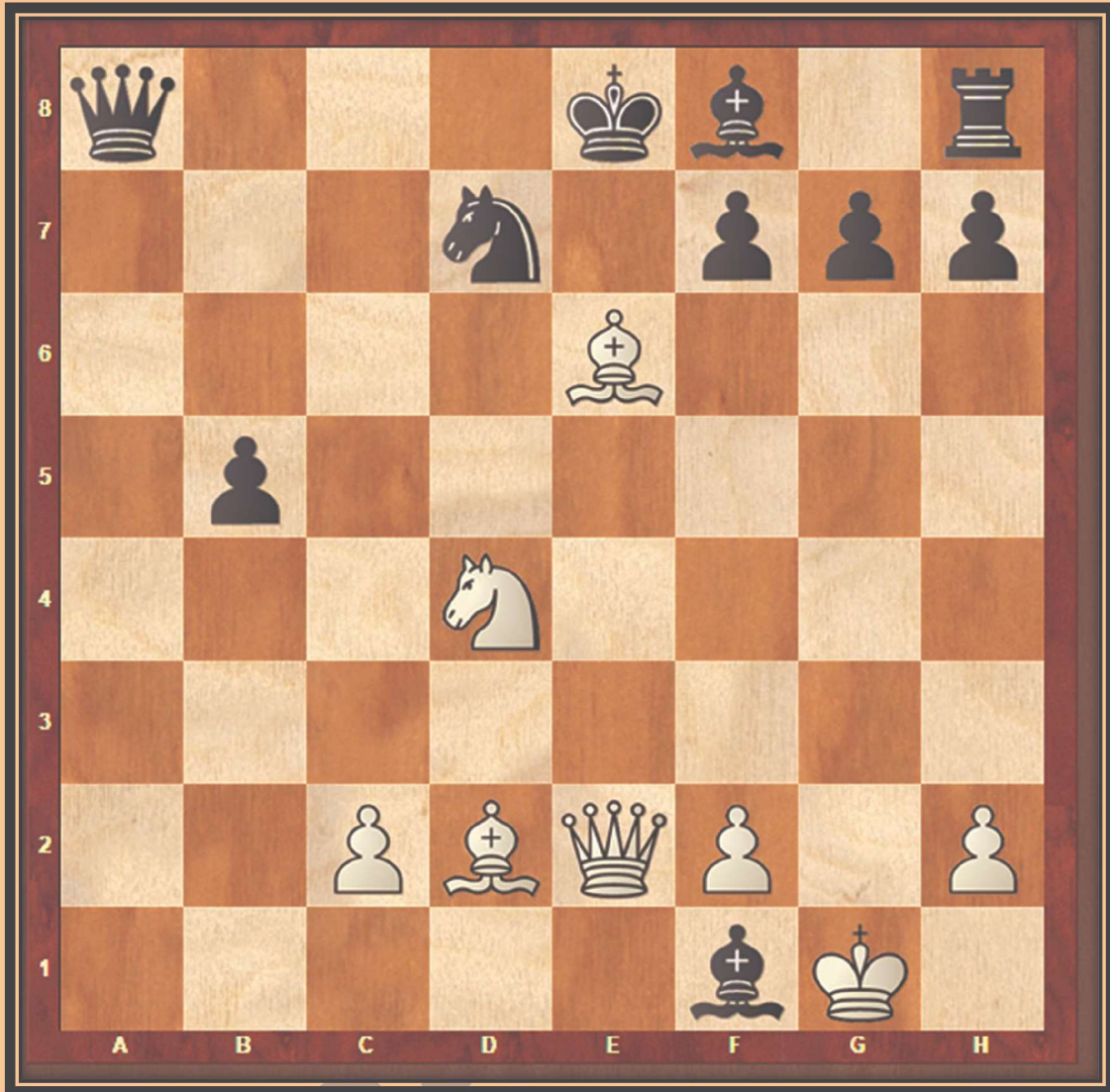
White to Play Create a Double Check

White	Black
1) _____	



White to Play Create a Double Check

White	Black
1) _____	



White to Play Create a Double Check

White	Black
1) _____	